

Calibrate Allegro recorders and printer

This document will show the steps to calibrate the picker to the height of each recorder and printer in the Allegro 100

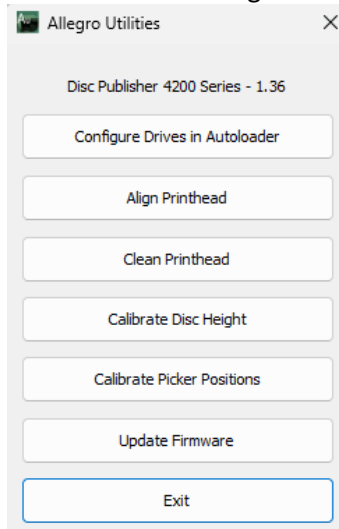
Required Tools

- Rimage Allegro 100
- Admin rights to launch Allegro Utilities
- One blank disc

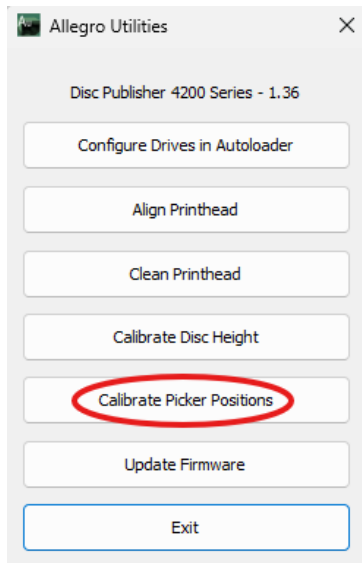
Setup

1. Attach the Rimage Allegro to the PC
2. Power on the Rimage Allegro and PC
3. Open Allegro Utilities program.

Start Menu > All Programs > Rimage Software Suite



4. Click on Calibrate Picker Positions

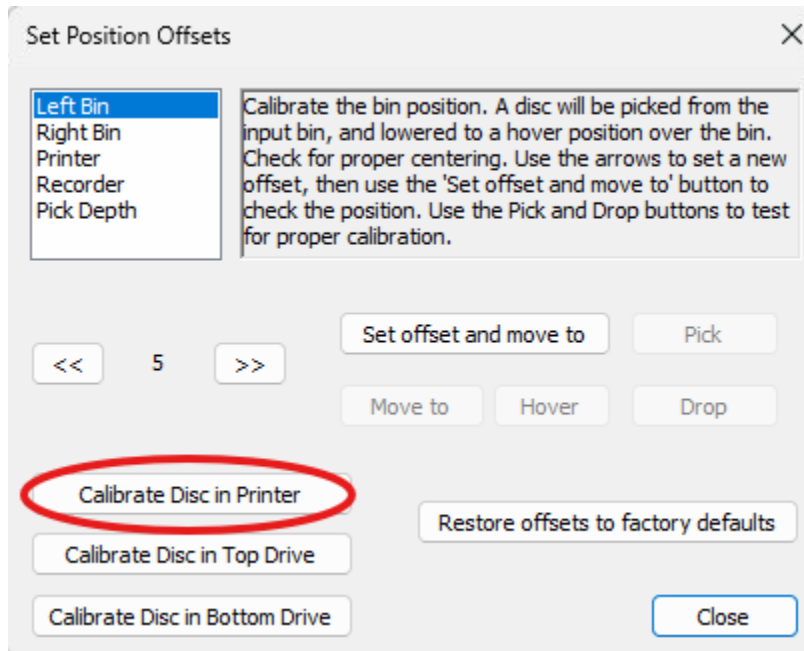


Calibrate Printer

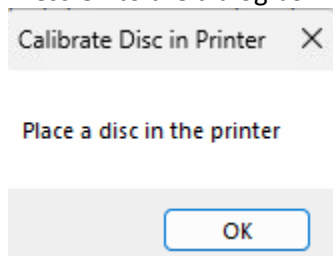
Note

These steps may be done with the lid open

1. Click on Calibrate Disc in Printer



2. The printer tray will now open. Place a disc on this tray
3. Press Ok to the dialog box



Note

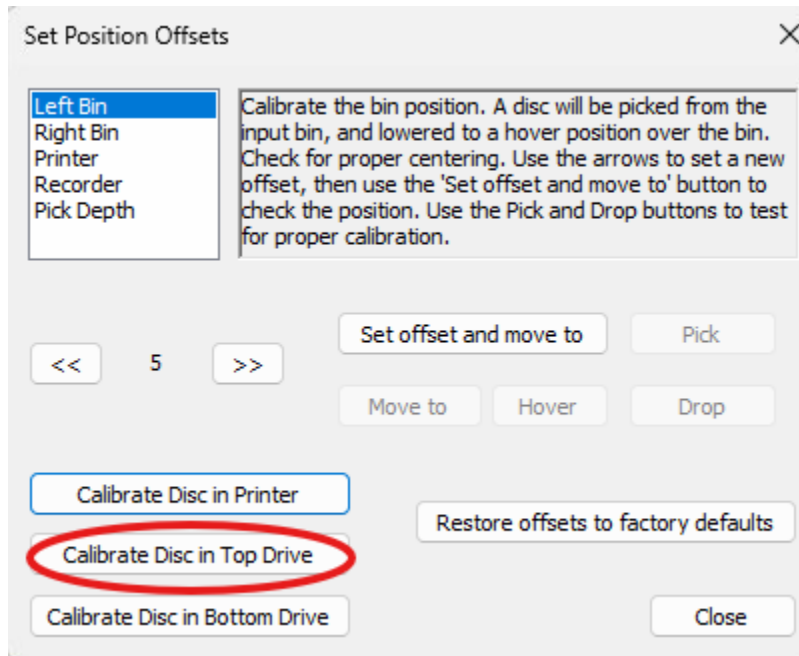
The arm will pick up the disc from the printer tray and move it to the right bin and place the disc down into the bin.

Calibrate Top Drive

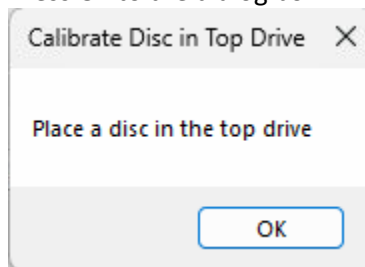
Note

These steps may be done with the lid open

1. Click on Calibrate Disc in Printer



2. The top recorder tray will now open. Place a disc on this tray
3. Press Ok to the dialog box



Note

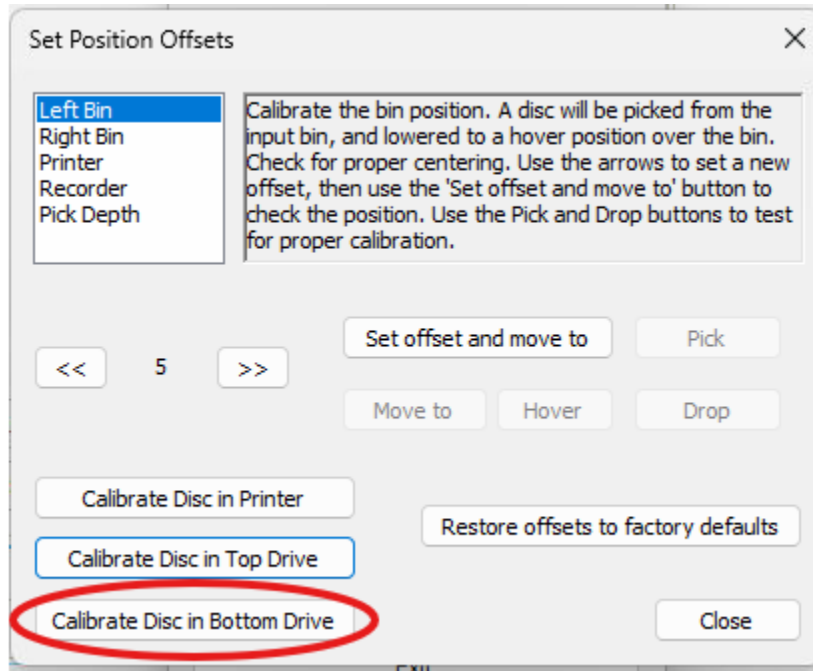
The arm will pick up the disc from the top recorder tray and move it to the right bin and place the disc down into the bin.

Calibrate Bottom Drive

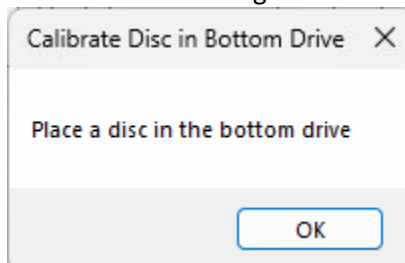
Note

These steps may be done with the lid open

1. Click on Calibrate Disc in Printer



2. The top recorder tray will now open. Place a disc on this tray
3. Press Ok to the dialog box



Note

The arm will pick up the disc from the top recorder tray and move it to the right bin and place the disc down into the bin.