

Reseat the Serial Cable to Resolve Error 171

Use this procedure to gain access to the internal end of the serial cable. Reseating this cable helps reduce the number of 171 errors.

Required Tools

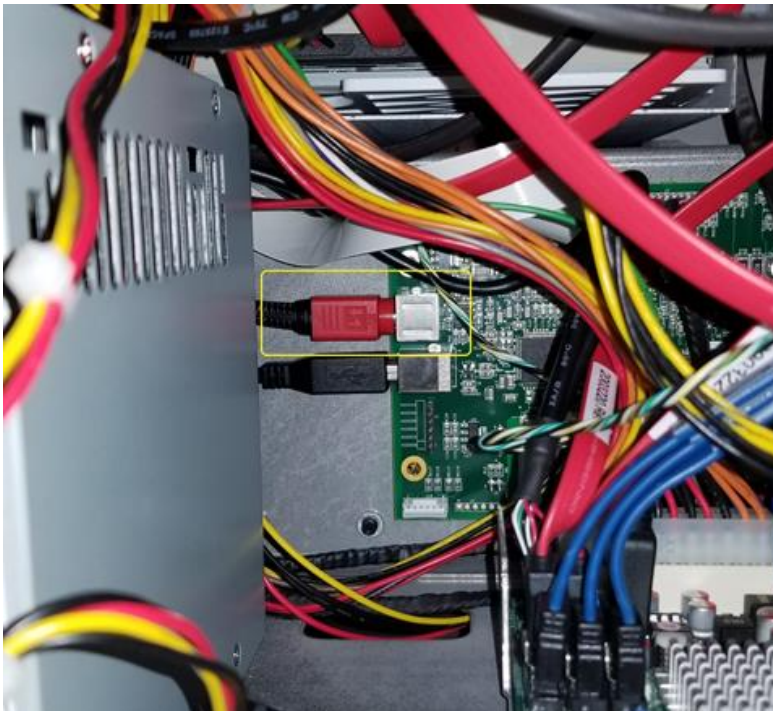
- Torx 10 screw driver

Before you Begin

- Power off the Rimage unit

Reseat the Serial Cable

1. Remove the screws on the back panel (qty. 8).
2. Disconnect the serial cable.



3. Reconnect the serial cable.
Note: This is a locking cable: Slide the red connector back, then connect the cable. The red connector will slide forward, locking into place.
4. Install the back panel.
5. Power on the unit.