

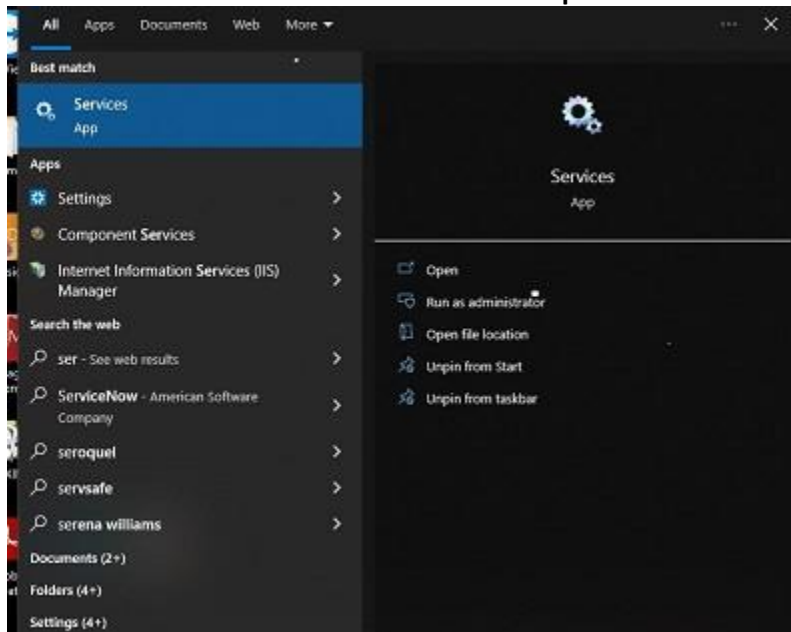
Updating Firmware for the 2450

Required Tools

- Latest autoloader firmware for the 2450. Locate this at www.rimage.com
- Gemini tool

Procedure for Rimage Producers and Catalyst.

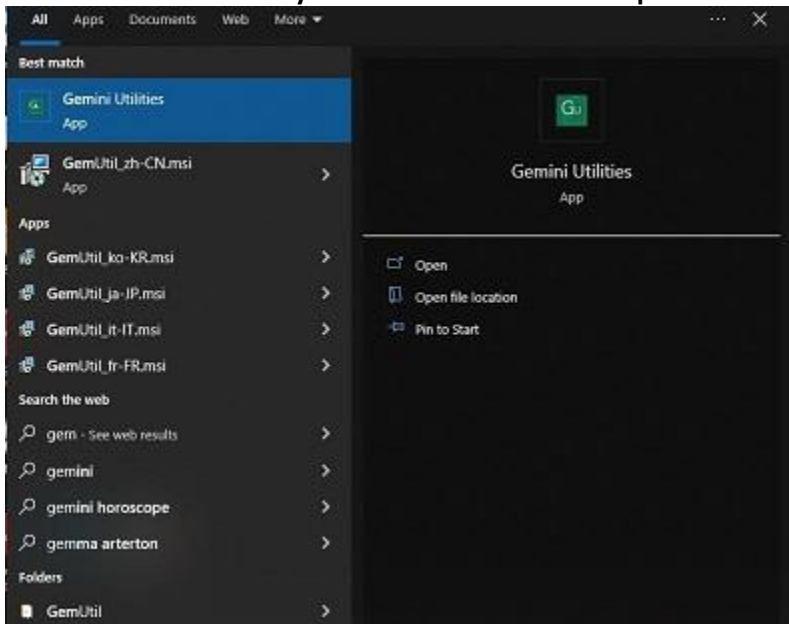
1. Locate services in the windows search on the pc.



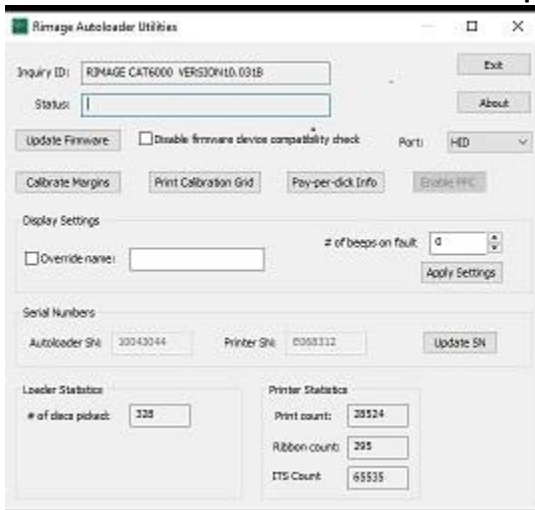
2. Stop the Rimage Production Services.

Program Compatibility Assistant Service	This service...	Running	Manual	Local System
Quality Windows Audio Video Experience	Quality Win...	Running	Manual	Local Service
Radio Management Service	Radio Mana...	Running	Manual	Local Service
Recommended Troubleshooting Service	Enables sub...	Running	Manual	Local System
Remote Access Auto Connection Manager	Creates a co...	Running	Manual	Local System
Remote Access Connection Manager	Manages d...	Running	Automatic	Local System
Remote Desktop Configuration	Remote Des...	Running	Manual	Local System
Remote Desktop Services	Allows user...	Running	Manual	Network Service
Remote Desktop Services UserMode Port Redir...	Allows the r...	Running	Manual	Local System
Remote Procedure Call (RPC)	The RPCSS s...	Running	Automatic	Network Service
Remote Procedure Call (RPC) Locator	In Windows...	Running	Manual	Network Service
Remote Registry	Enables rem...	Disabled	Manual	Local Service
Retail Demo Service	The Retail D...	Running	Manual	Local System
Rimage Discovery Server	Rimage Dis...	Running	Automatic	Local Service
Rimage Image Server	Rimage ima...	Running	Automatic	.\RimageServices
Rimage Messaging Server	Manages co...	Running	Automatic	.\RimageServices
Rimage Production Server	Rimage Pro...	Running	Automatic	Local System
Rimage Registry Server	Provides su...	Running	Automatic	.\RimageServices
Routing and Remote Access	Offers routi...	Running	Disabled	Local System
SD-WAN Fabric Manager	Resolves RD...	Running	Automatic	Network Service

3. Locate the Gemini Utility in Windows search on the pc.



4. Launch the Utility and browse to the location you saved the firmware file that was downloaded from our website. Press the update firmware button.



R I M A G E®

5. When it is completed, restart the Rimage production server. Now the latest version should show in the Rimage system manager.

