
Rimage Everest Printer™

User Guide



R I M A G E™ Advancing the art of digital delivery.

Corporate Headquarters:

Rimage Corporation
7725 Washington Avenue South
Minneapolis, MN 55439
USA

800 553 8312 (toll free US)
Service: +1 952 946 0004
(International)
Fax: +1 952 944 6956

European Headquarters:

Rimage Europe GmbH
Hans-Böckler-Straße 7
63128 Dietzenbach, Germany

Tel: +49-(0) 6074-8521-0
Fax: +49-(0) 6074-8521-21

CD and DVD Recording Software Disclaimer

This Product, Software, or Documentation may be designed to assist you in reproducing material in which you own the copyright or have obtained permission to copy from the copyright owner. Unless you own the copyright or have permission to copy from the copyright owner, you may be violating copyright law and be subject to payment of damages and other remedies. If you are uncertain about your rights, you should contact your legal advisor. If you are neither in possession of the copyright nor have authorization from the owner of the copyright, unauthorized copying of CDs or DVDs violates national and international legislation and can result in severe penalties.

Rimage Corporation reserves the right to make improvements to the equipment and software described in this document at any time without any prior notice. Rimage Corporation reserves the right to revise this publication and to make changes from time to time in the content hereof without obligation of Rimage Corporation to notify any person or organization of such revisions or changes.

This document may contain links to web sites that were current at the time of publication, but may have moved or become inactive since. This document may contain links to sites on the Internet that are owned and operated by third parties. Rimage Corporation is not responsible for the content of any such third-party site.

©2005, Rimage Corporation

Rimage™ is a trademark of the Rimage Corporation. Everest Printer™ is a trademark of the Rimage Corporation. Dell® is registered trademark of Dell Computer Corporation. FireWire® is a registered trademark of Apple Computer, Inc.

All other trademarks and registered trademarks are the property of their respective owners.

Support information

US, Asia/Pacific, Mexico/Latin America

Rimage Corporation
7725 Washington Avenue South
Minneapolis, MN 55439
USA
Attn: Rimage Services
Service:

North America: 800-553-8312

Asia/Pacific, Mexico/ Latin America: 952-946-0004

FAX: 952-946-6956

Rimage Support Website

<http://www.rimage.com/support.html> select the appropriate Product Family and then select your product. If you cannot find a solution on our website, email Rimage Services at support@rimage.com.

Europe

Rimage Europe GmbH
Hans-Böckler-Straße 7
63128 Dietzenbach, Germany
Tel: +49-(0) 6074-8521-0
FAX: +49-(0) 6074-8521-21

Rimage Europe Technical Website

<http://www.rimage.de/support.html>
Select the appropriate Support link to learn more. If you cannot find a solution on our website, email Rimage Services, Europe at support@rimage.de.

When you contact Rimage Services, please provide:

- Unit serial number and software version.
- Functional and technical description of the problem.
- Exact error message received.

Contents

Introduction	1
Printer Requirements.....	1
Operating System requirements.....	1
Media requirements.....	1
Ribbon requirements	1
Label design requirements	2
Identify the parts of the Everest printer	3
Front view	3
Rear view	3
Control panel	4
Everest printer switches	5
Mode switch	5
AC voltage switch.....	5
Operate the Rimage Everest printer	6
Installing the Everest printer driver	6
Install the Everest printer driver on Windows	6
Install the Everest printer driver on Macintosh	7
Powering on the printer	7
Placing a CD on the printer drawer.....	8
Setting up your printing preferences in Windows.....	9
Navigate to printing preferences	9
Setting media size, media type, orientation, and ribbon type	10
Setting print quality, color matching, and image adjustments	11
Setting the printable area	12
Adjusting the print alignment and color density.....	13
Setting up your printing preferences on a Macintosh.....	14
Navigate to printing preferences	14
Setting media type, ribbon type, and number of copies	14
Setting print quality and color matching	15
Setting the printable area	15
Adjusting the print alignment and color density.....	16
Maintain the Everest printer	17
Maintenance schedule.....	17
Changing the print ribbon	18

Changing the retransfer ribbon	20
Cleaning the Everest printer	22
Clean the printhead	22
Clean the tacky rollers	23
Clean the air filter	24
Clean the platen roller	25
Learn More	27
Status Messages	27
Everest Printer Specifications	28
Technical support and product updates	29
Safety precautions	29
Safety Testing	30
Rimage Everest Printer Limited 1 Year Warranty	31

Introduction

This manual provides the information needed to operate the Rimage Everest printer, identify the parts, and configure printing preferences. To unpack and setup your Everest printer, refer to the *Everest Unpacking and Setup Instructions* included with your product.

Printer Requirements

Operating System requirements

The Rimage Everest printer is compatible only with Windows 2000 and XP, and Macintosh OS 8.6 to 9.1. It requires one USB port.

Media requirements

You must use discs that are coated with a surface designed for thermal retransfer printing. The media in Rimage Media Kits™ is designed for optimum use in the Everest printer.

For more information about Rimage Media Kits™ – convenient packages of thermal retransfer-printable discs and ribbons, all guaranteed by Rimage – contact Rimage at 800-445-8288.

Ribbon requirements

The Everest printer requires a print ribbon and a retransfer ribbon. The print ribbon has three colors: Cyan, Magenta, and Yellow (CMY). These three colors combine in printing to create full color discs. Print ribbons are also available in black and CMY+White.

The printer transfers the color from the print ribbon to a retransfer ribbon before it is applied to the disc. Each retransfer ribbon completes 1000 discs. The ribbons provided in Rimage Media Kits are designed for optimum use in the Everest printer.

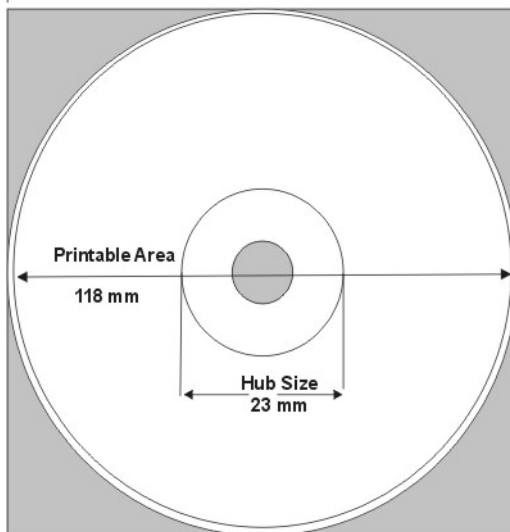
Ribbons	Part Number	Number of Discs Printed
3-Color (CMY)	202944-001	500
4-Color (CMYW)	202945-001	375
Black (monochrome)	202946-001	1000
Retransfer ribbon	203384-001	1000

Label design requirements

The Everest printer ships with CD Designer™, a label-editing program you can use to design your labels.

If you have another software application that you prefer, you can create a label and save it as an Acrobat® (.pdf) file, a .jpg file, or a .tiff file. To create a label with another software application, use the following criteria:

- Color Depth – Save the artwork for the label with the color set to millions of colors.
- DPI – Use pictures or logos set to 300 DPI (Dots Per Inch).
- Label Design Size – A full size disc is 120 mm (4.723"). The hole is 15mm (0.59"). The printable area and hub sizes vary depending on the disc manufacturer.



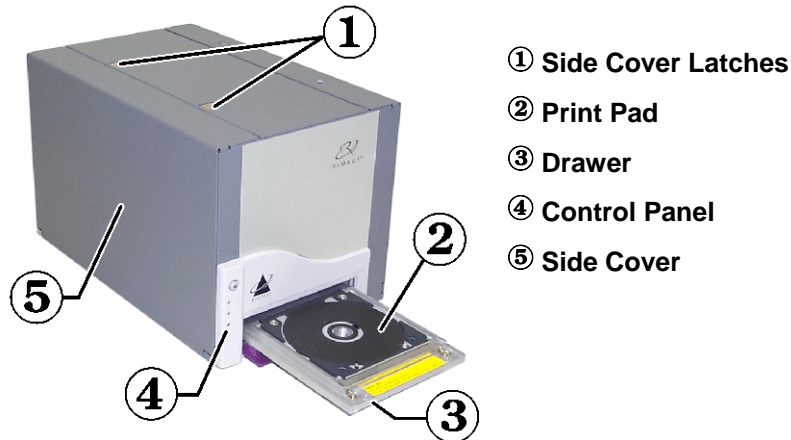
- Media – The media that is in Rimage Media Kits™ has a printable area of 24-118 mm. Most labels print well with the print settings set to 24 mm and 118 mm. To eliminate the white areas that may appear at the center or edge of the disc, you may want to use settings of 23 mm and 119 mm.

For more information about Rimage Media Kits™ – convenient packages of thermal retransfer-printable discs and ribbons, all guaranteed by Rimage – contact Rimage at 800-445-8288.

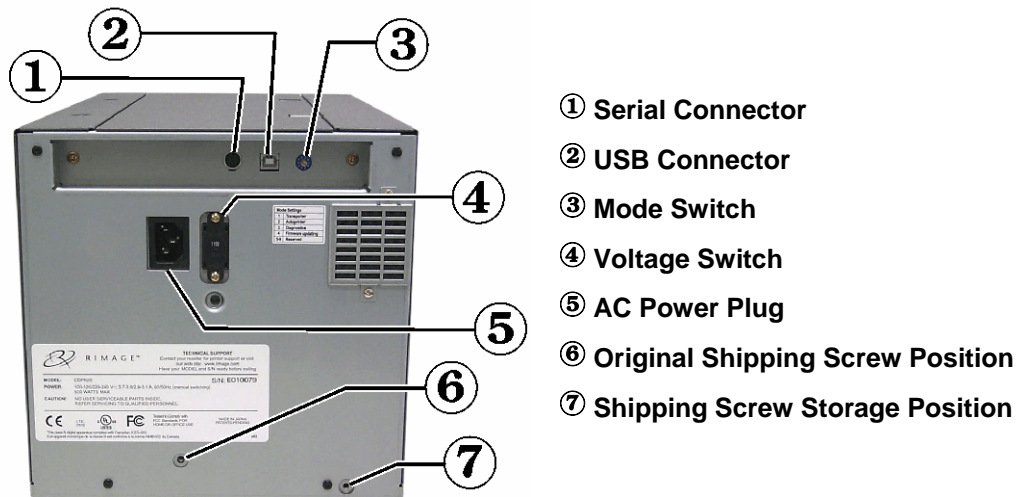
Identify the parts of the Everest printer

This section describes the Everest printer hardware and features. These features are shown in front and rear views.

Front view

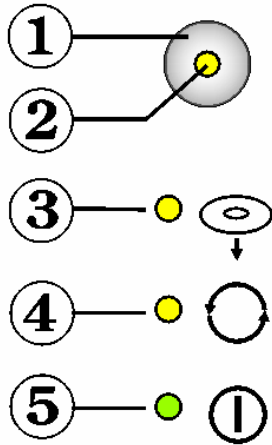



Rear view



Control panel

The control panel, located on the front of the printer, includes an operator button and three LED's (Light Emitting Diodes). The control panel allows you to monitor and control the Everest printer.



 **Tip:** If all LEDs are blinking, the printer did not initialize properly. Remove the power cord, set the mode switch to the proper position, and plug the power cord in again.

1. Operator Button

The operator button is used to complete the following:

- Open the printer drawer
- Close the close the printer drawer
- Reset after an error
- Put the printer into sleep mode



Tip: To put the printer into sleep mode, press the **operator button** for 10 seconds. Press the **operator button** again to resume normal operation.

2. Error LED

The error LED, located on the operator button, lights when operator action is required.

3. CD Present LED

The CD present LED lights when a CD is placed on the drawer or when the CD is properly clamped.

4. Active LED

The active LED lights when the printer has completed initialization. When the Everest printer is receiving data from the host, the active LED flashes every 0.5 seconds.

5. Power LED

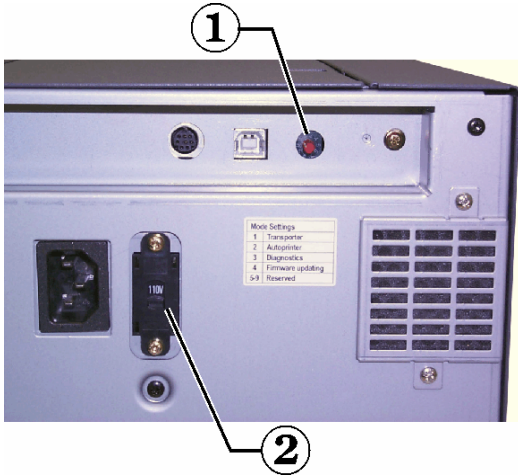
The power LED lights when Everest printer is on.

Everest printer switches

There are two switches on the rear of the Everest printer: the mode switch and the AC voltage switch.

① Mode Switch

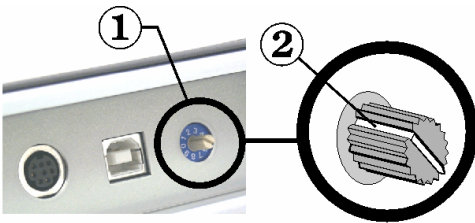
② AC Voltage Switch



Mode switch

The mode switch is a rotary switch used to set the operational mode of the Everest printer. After changing the mode, the printer must be powered on again to recognize the change. The recessed line on the switch indicates the selected mode.

ⓘ **Important:** The mode switch must be set to match your equipment type.

Switch Position	Mode	Mode Switch
0	Everest Standalone	 <p>① - Mode Switch ② - Recessed Line</p>
1	Rimage Autoloader	
2	AutoPrinter	
3	Diagnostic	
4	Flash Update	
5 – 9	Reserved	

AC voltage switch

The AC voltage switch is used to select the AC voltage of the power outlet.

⚠ Warning! Set the AC voltage switch to match the AC voltage of the AC power outlet!

Operate the Rimage Everest printer

This section provides the information needed to use your Everest printer.

Installing the Everest printer driver

Before printing, you must install the printer driver. If your Rimage Everest printer was included with an autoloader that has an embedded PC or a control center, the Everest printer driver is already installed.

 **Important:** If an older version of the Everest printer driver was previously installed, remove the previous version before installing the new one.

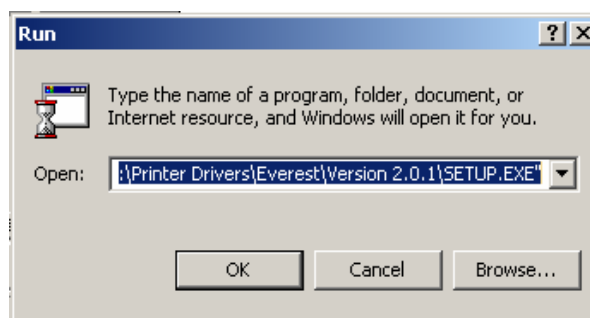
Before you begin:

1. Connect the USB cable.
2. Connect the power cord.
3. Power on the printer.
4. If the *Found New Hardware Wizard* opens, select **Cancel**.
5. On the computer, close all applications.

Install the Everest printer driver on Windows

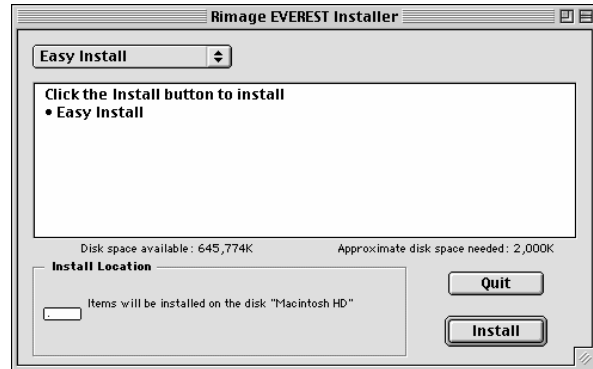
 **Note:** To install the Everest printer driver, you must be logged into Windows as an administrator.

1. Insert the software CD in the PC disc drive.
2. **Navigate:** Start > Run > Browse.
3. From the software CD, select the Everest printer driver **Setup.exe** file.
4. Follow the prompts to complete the installation.

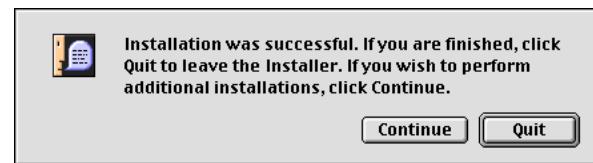


Install the Everest printer driver on Macintosh

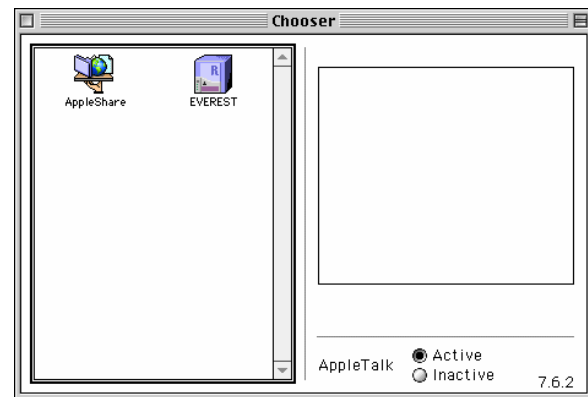
1. Insert the software CD in the computer disc drive.
2. Run the **Rimage Everest Installer**.
3. Select the **Install** button. The installation begins.



4. When the installation is complete, select **Quit** to leave the installer.




5. Select **Chooser**.
6. Select **Everest**.
7. Select the USB printing port.
8. Close the *Chooser* window.



Powering on the printer

The Everest printer does not have a power switch:

- If the Everest printer is on an autoloader, the printer is powered on when the autoloader is powered on.
- If the Everest printer is a standalone printer, connect the power cord to an outlet to power on the printer.

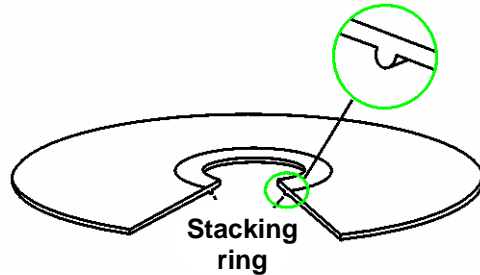
 **Note:** The printer will go into power saving mode if it is idle for more than 30 minutes. When this occurs, the printer will take 2-3 minutes to warm-up after a job is sent to the printer.

Placing a CD on the printer drawer

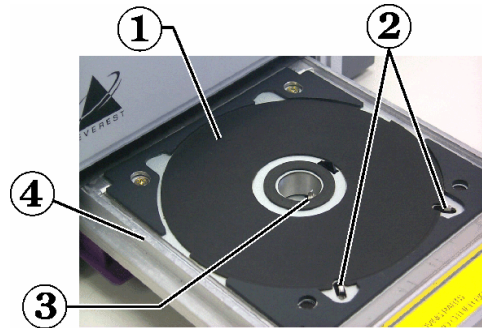
To avoid scratching or damaging the recording surface of the disc, it is important to properly place the disc on the printer drawer. Use this procedure to place the disc on the printer drawer.

1. Press the **operator button** to open the printer drawer.
2. Place the disc on the **print pad** so the stacking ring is facing down and the centering pin comes up through the center hole.

❗ **Important:** The disc must not rest on the holding pins or the centering pin.




- ① Print Pad
- ② Holding Pins
- ③ Centering Pin
- ④ Print Drawer



Setting up your printing preferences in Windows

Printing preferences allow you to set up your Everest printer to produce the best possible labels on your discs.


 **Note:** If you are using a design program other than CD Designer, and printing with a Rimage autoloader system, the print driver settings must be configured before printing. If you are using CD Designer, the driver parameters are saved in the label file (.btw).

Navigate to printing preferences

1. **Navigate:** Start > Settings > Printers.
2. Right-click on the desired Everest printer and select *Printing Preferences* from the dropdown menu. The *Rimage Everest Properties* dialog displays.

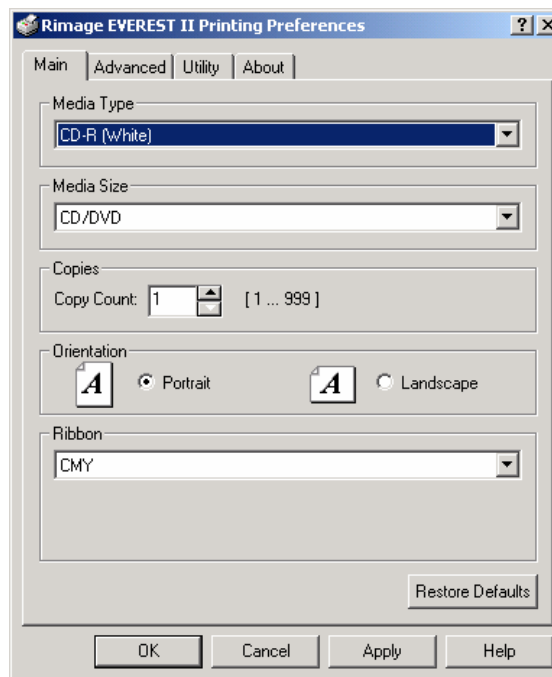
Or

1. Open the desired label file in CD Designer.
2. From the **File** menu, select **Print**. The *Print* window opens.
3. Select the **Document Properties** button. The *Rimage EVEREST Properties* dialog displays.

 **Note:** Changes made to the printing preferences in CD Designer will override changes made to the printer preferences through the printer driver.

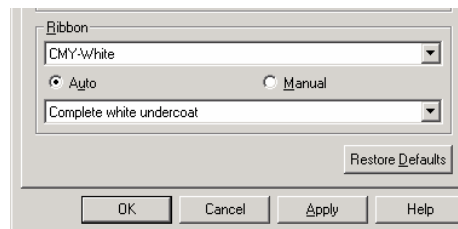
Setting media size, media type, orientation, and ribbon type

1. Navigate to printing preferences.
2. Select the **Main** tab.
3. View or change the printing preferences.
 - a. From the **Media Type** drop-down menu, select the appropriate **Media Type**.
 - b. From the **Media Size** dropdown list, select the appropriate **Media Size**.
 - c. Select the desired number of copies.
 - d. Select the desired **Orientation**.
 - e. From the **Ribbon** drop-down list, select the appropriate **Ribbon Type**.



If you select **CMY+White** ribbon, select **Manual** or **Auto**:


- Select the **Manual** radio button to send one color label file and then manually send another label file telling the printer where to apply the white background.
- Select the **Auto** radio button option to automatically print a white background.



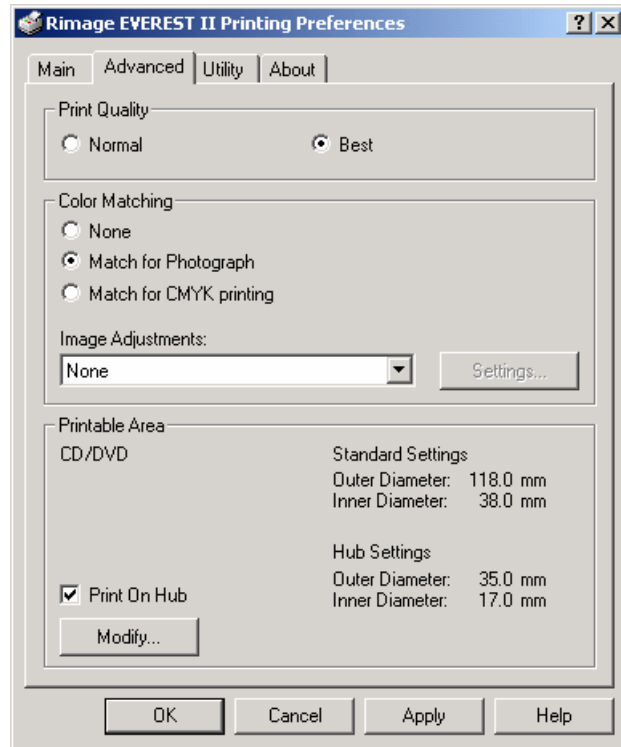
If you select **Auto**, select **Complete White Undercoat** or **Make Pure White Transparent** from the dropdown list.

- The **Complete White Undercoat** selection applies a white background to the entire printable area of the disc. The printable area is defined under the **Advanced** tab.
 - The **Make Pure White Transparent** selection does not print the areas of a picture that are pure white.
4. When you have made the desired choices, select **Apply**.
 5. To close the Preferences window, select **OK**.

Setting print quality, color matching, and image adjustments

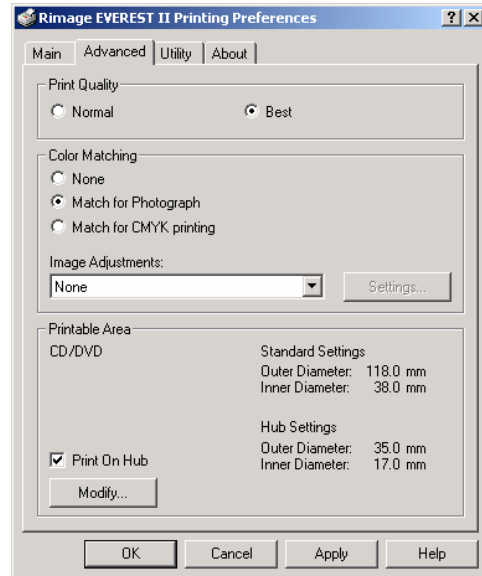
1. Navigate to printing preferences.
2. Select the **Advanced** tab.
3. View or change the printing preferences.
 - a. Select the desired **Print Quality**.
 - b. Select the desired **Color Matching**.
-  **Note:** The default setting for color matching is **CMYK**.

 - c. From the **Image Adjustments** dropdown list, select **None**, **High contrast**, **Vivid color**, or **Custom**. If you select **Custom**:
 - i. Select the **Settings** button. The *Custom Settings* window opens.
 - ii. Select the desired **Print Threshold** settings.
 - iii. Use the **Contrast** and **Saturation** sliders to adjust image contrast and saturation.
 - iv. To close the *Custom Settings* window, select **OK**.
4. When you have made the desired choices, select **Apply**.
5. To close the **Preferences** window, select **OK**.

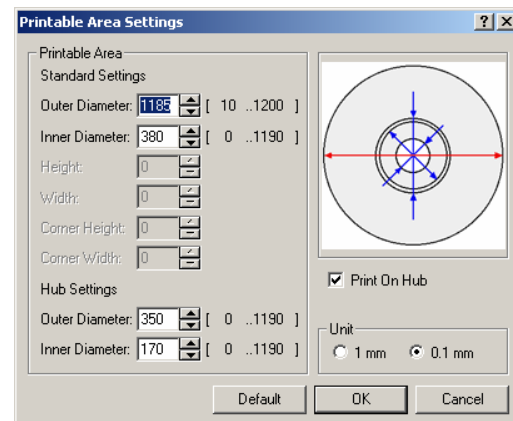


Setting the printable area


1. Navigate to printing preferences.
2. Select the **Advanced** tab.
3. View or change the printing preferences.
 - a. To print on the disc hub, select the **Print on Hub** checkbox.
 - b. To modify the printable area, select the **Modify** button. The *Printable Area Settings* window opens.

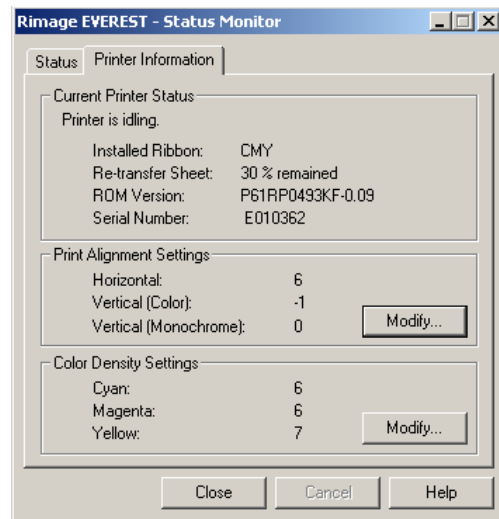
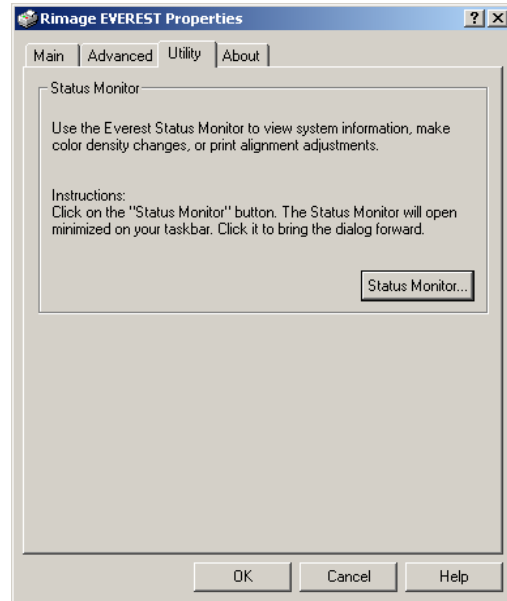


- c. In the Printable Area Settings window, enter:
 - The desired outer diameter
 - The desired inner diameter
 - d. To apply the settings, select **OK**.
 - e. To close the window without applying the settings, select **Cancel**.
4. When you have made the desired choices, select **Apply**.
5. To close the *Preferences* window, select **OK**.



Adjusting the print alignment and color density

1. Navigate to printing preferences.
 2. Select the **Utilities** tab.
 3. From the **Utilities** tab, select the status monitor. The *Status Monitor* dialog displays minimized on your taskbar.
 4. From your taskbar, select the *Status Monitor*. The *Status Monitor* dialog is active.
-  **Tip:** On the **Status** tab, you can view information about the Everest printer such as the current firmware version, the progress of a print job, the installed ribbon type, and the percentage of retransfer sheet remaining.
5. Select the **Printer Information** tab.
 6. View or change the Print Alignment Settings.
 - a. From the *Print Alignment Settings* pane, select the **Modify** button.
 - b. Select the desired print alignment settings.
 7. View or change the Color Density Settings.
 - a. From the *Color Density Settings* pane, select the **Modify** button.
 - b. Select the desired color density settings.
 8. To close the *Status Monitor* dialog, select **Close**.



Setting up your printing preferences on a Macintosh

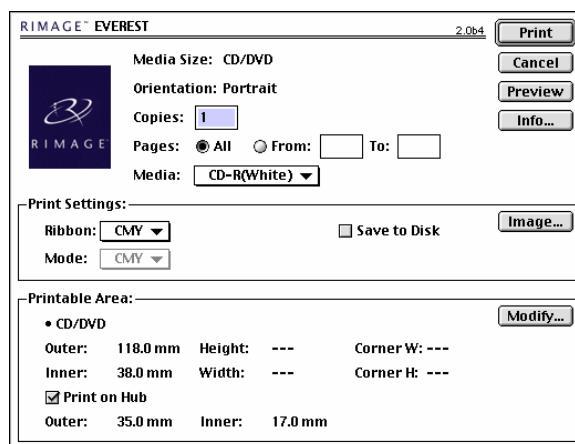
Printing preferences allow you to set up your Everest printer to produce the best possible labels on your discs.

Navigate to printing preferences

1. Open the label file in the application of your choice.
2. From the **File** menu, select **Print**. The Everest properties dialog displays.

Setting media type, ribbon type, and number of copies

1. Navigate to printing preferences.
2. View or change the printing preferences.
 - a. From the **Media Type** drop-down menu, select the appropriate media type.
 - b. Enter the desired number of copies.
 - c. From the **Ribbon** dropdown list, select the appropriate ribbon type.



If you select **CMY + White**, select **Auto:Complete White Undercoat**, **Auto:Make Pure White Transparent**, or **Manual:Step** from the **Mode** dropdown list:

- The **Auto:Complete White Undercoat** selection applies a white background everywhere on the printable area of the disc.
- The **Auto:Make Pure White Transparent** selection makes pure white areas of an image transparent.
- **Manual:Step1** and **Manual:Step2** allows you to manually determine where a white background is applied.

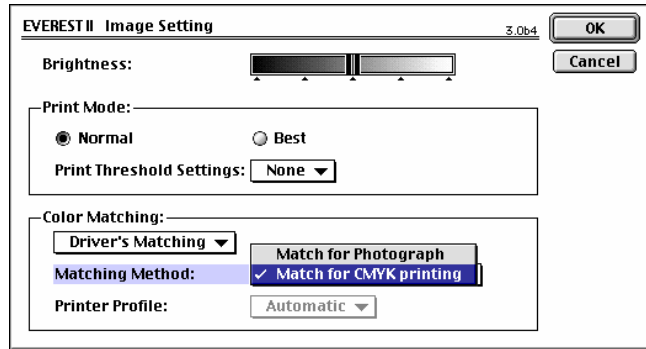
3. When you have made the desired choices, select **Print**.

Or

To close the Everest properties dialog without saving your changes, select **Cancel**.

Setting print quality and color matching

1. Navigate to printing preferences.
2. View or change the printing preferences.
3. Select the **Image** button. The Image Setting window opens.
 - a. Select the desired image **Brightness**.
 - b. Select the desired **Print Quality**.
 - c. Select the desired **Color Matching**.



Note: The default setting for color matching is **CMYK**.

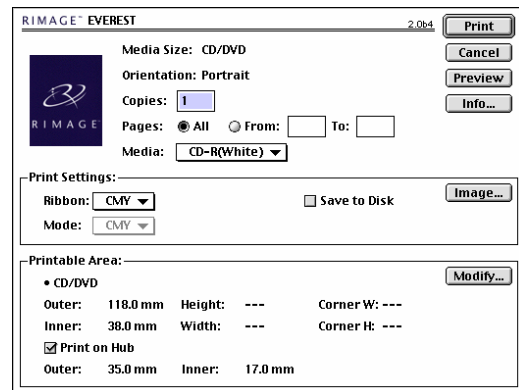
4. When you have made the desired choices, select **Print**.

Or

To close the Everest properties dialog without saving your changes, select **Cancel**.

Setting the printable area

1. Navigate to printing preferences.
2. View or change the printing preferences.
 - a. To print on the disc hub, select the **Print on Hub** checkbox.
 - b. To modify the printable area, select the **Modify** button.
 - c. Select the desired **Printable Area** settings.



3. When you have made the desired choices, select **Print**.


Or

To close the Everest properties dialog without saving your changes, select **Cancel**.

Adjusting the print alignment and color density

1. Navigate to printing preferences.

2. Select the **Info...** button. The Information dialog displays.

 **Tip:** In the Information dialog, you can view information about the Everest printer such as the current firmware version, the progress of a print job, the installed ribbon type, and the percentage of retransfer ribbon remaining.

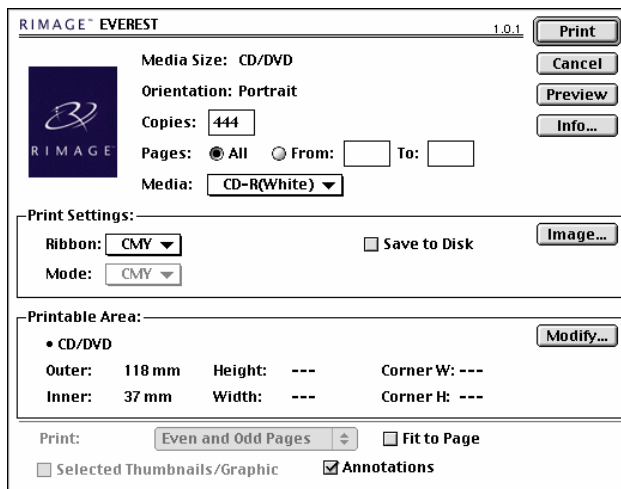
3. View or change the Print Alignment Settings.

- From the Print Alignment Settings pane, select the **Modify** button.
- Select the desired print alignment settings.

4. View or change the Color Density Settings.

- From the color density settings pane, select the **Modify** button.
- Select the desired Color Density Settings.

5. To close the Information dialog, select **Close**.



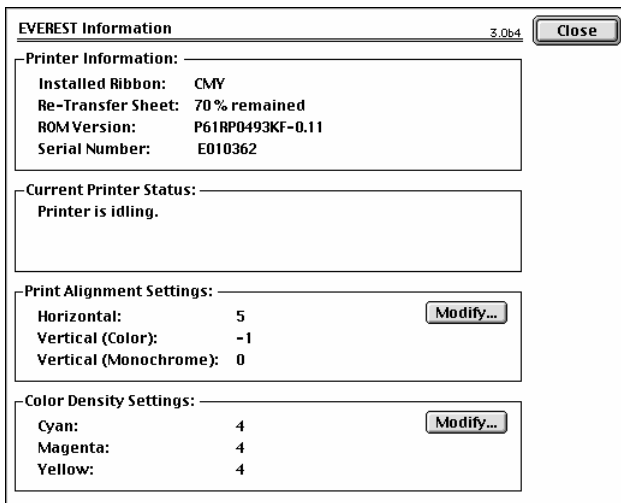
RIMAGE EVEREST 1.0.1 [Print] [Cancel] [Preview] [Info...]

Media Size: CD/DVD
 Orientation: Portrait
 Copies: 444
 Pages: ☒ All ☐ From: To:
 Media: CD-R(White)

Print Settings:
 Ribbon: CMY [Image...]
 Mode: CMY ☐ Save to Disk

Printable Area: [Modify...]
 • CD/DVD
 Outer: 118 mm Height: --- Corner W: ---
 Inner: 37 mm Width: --- Corner H: ---

Print: [Even and Odd Pages] ☐ Fit to Page
☐ Selected Thumbnails/Graphic ☒ Annotations



EVEREST Information 3.0b4 [Close]

Printer Information:
 Installed Ribbon: CMY
 Re-Transfer Sheet: 70% remained
 ROM Version: P61RP0493KF-0.11
 Serial Number: E010362

Current Printer Status:
 Printer is idling.

Print Alignment Settings: [Modify...]
 Horizontal: 5
 Vertical (Color): -1
 Vertical (Monochrome): 0

Color Density Settings: [Modify...]
 Cyan: 4
 Magenta: 4
 Yellow: 4

Maintain the Everest printer

! **Important!** For optimum performance, keep the Everest printer in a clean, dust-free environment.

To keep the Everest printer operating at optimum performance, you must:

- Change the print ribbon
- Change the retransfer ribbons
- Clean the printhead
- Clean the tacky roller
- Clean the air filter
- Clean the platen roller

Maintenance schedule

Task	Frequency
Change the print ribbon	3-Color Ribbon (CMY) After 500 discs
	4-Color Ribbon (CMYW) After 375 discs
	Black Ribbon (monochrome) After 1000 discs
Change the retransfer ribbon	After 1000 discs
Clean the printhead	Every 500 discs (every time you change the print ribbon)
Clean the tacky rollers	Every 500 discs (every time you change the print ribbon)
Clean the air filter	Every 500 discs (every time you change the print ribbon)
Clean the platen roller	As needed The platen roller should be cleaned only if you notice a diminished print quality, such as white specks, on the printed disc.

Required tools:

- Sponge swabs with long handles
- High grade isopropyl alcohol

For best results, use the Everest cleaning kit (part number 210725-001), which includes the tools listed above.

Changing the print ribbon

Before changing the Everest print ribbon, allow time for the new ribbon to become acclimated to the environment. Allow more time for greater temperature and/or humidity differences.

Ribbons must be stored at a temperature between 50°– 90°F (10–32°C). Avoid moisture and direct sunlight. Do not reuse ribbons.

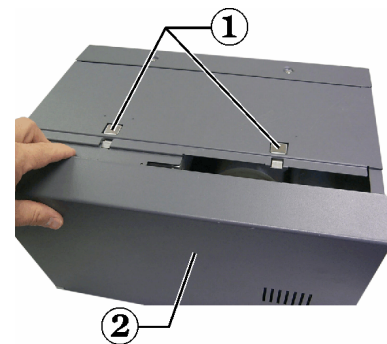
Before you begin:

Power off the **printer**

1. Remove the **print ribbon**.


- c. Press the **two cover latches** to release the side cover.
- d. Lower the **side cover**.

- ① Cover Latches
- ② Side Cover

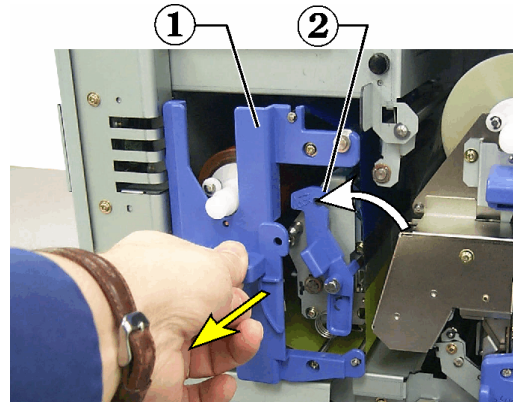


- e. Turn **latch 1** counter-clockwise.
- f. Remove the **print ribbon carrier**.
- g. Remove the **print ribbon** from the carrier.

2. Discard the used **print ribbon**.

 **Tip:** Perform cleaning procedures while the print ribbon is removed. Refer to 'Cleaning the Everest printer' on page 22.

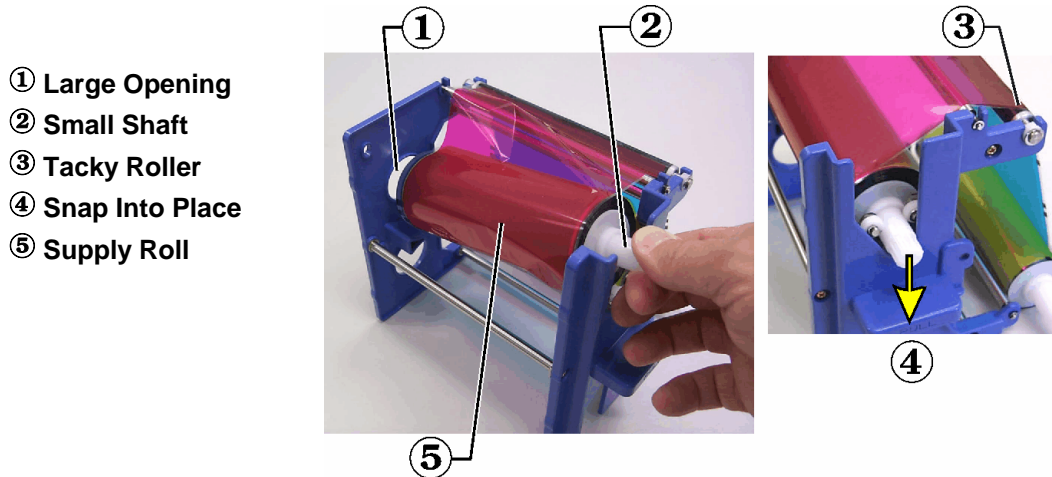
- ① Print Ribbon Carrier
- ② Latch 1



3. Install the new **print ribbon**.


- a. Remove the new **ribbon** from the packaging.
- b. Install the **supply roll** end of the **print ribbon** on the top of the carrier.
- c. Insert the large shaft in the large opening and snap in the small shaft.

 **Note:** The ribbon must come over the tacky roller.

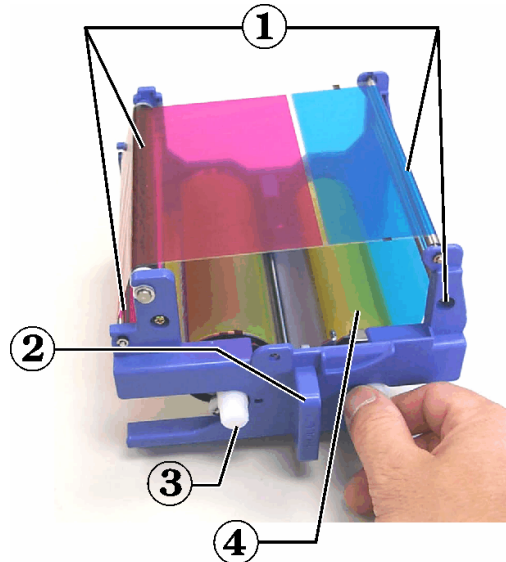


- d. Wrap the ribbon around the **guide rollers**.
- e. Install the **take up roll**.
- f. Rotate the **take up roll** so the ribbon is aligned and without creases.

 **Tip:** You may need to lift the ribbon up from the tacky roller to straighten it.

 **Note:** If you installed a monocolour ribbon, advance the ribbon so the ink portion of the ribbon is advanced to the take up roll.

- ① Guide Rollers
② Pull Handle
③ Supply Roll
④ Take Up Roll



4. Reassemble the **printer**.

- a. Slide the **carrier** into the printer.
- b. Close **latch 1**.
- c. Close the **side cover**.

5. Power on the **printer**. The printer is ready.

Changing the retransfer ribbon

Before changing the Everest retransfer ribbon, allow time for the new ribbon to become acclimated to the environment. Allow more time for greater temperature and/or humidity differences.

Ribbons must be stored at a temperature between 50°– 90°F (10–32°C). Avoid moisture and direct sunlight. Do not reuse ribbons.

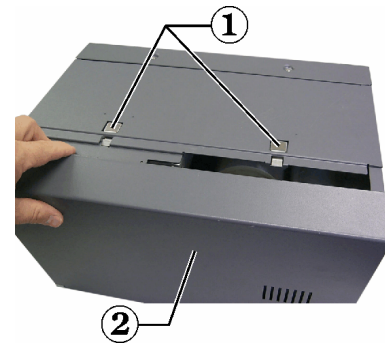
Before you begin:

Power off the **printer**

1. Remove the **retransfer ribbon**:

- a. Press the **two cover latches** to release the side cover.
- b. Lower the **side cover**.

- ① Cover Latches
- ② Side Cover



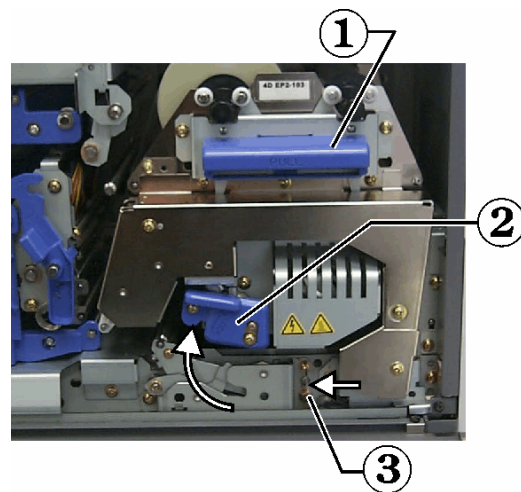
- c. Open **Latches 1, 2, and 3**.

- ① Retransfer Ribbon Carrier
- ② Latch 2
- ③ Latch 3

- d. Pull out the **retransfer ribbon carrier**.

 **Note:** The **retransfer ribbon carrier** cannot be removed from the printer.

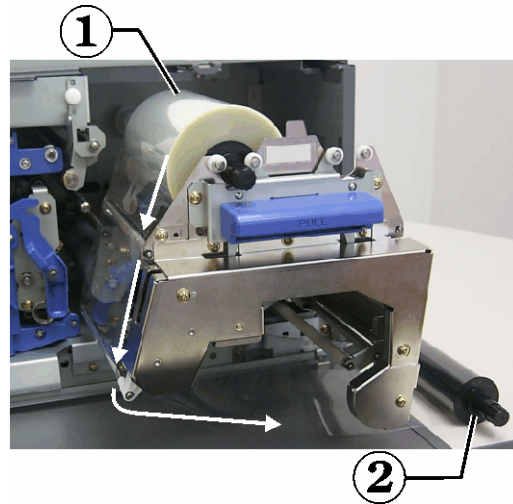
- e. To remove the **retransfer ribbon** from the carrier, lift the retransfer rolls up and carefully slide the retransfer ribbon from the retransfer ribbon carrier.



2. Discard the used **retransfer ribbon**.
3. Install the new **retransfer ribbon**.
 - a. Remove the **retransfer ribbon** from the packaging.
 - b. With the supply roll on the left side, slide both **retransfer rolls** under the retransfer ribbon carrier.
 - c. Install the **supply roll** on the left side of the carrier and snap into place.

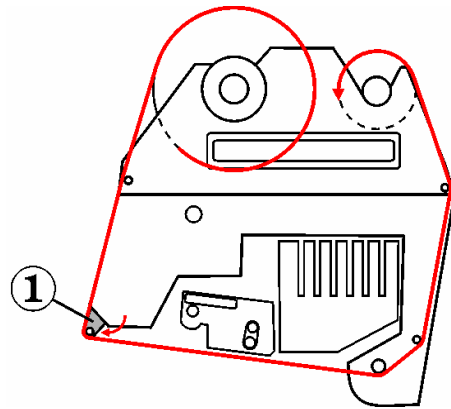
① **Supply Roll**

② **Take Up Roll**



- d. Bring the take up **roll up** and around the guide rollers and snap into place.
- e. Ensure the **retransfer ribbon** is aligned and straight across all the ribbon guides.
- f. Take up the **ribbon** slack by turning the take up roll counterclockwise

① **Position of lower guide.**



4. Reassemble the **printer**.
 - a. Slide the **retransfer carrier** into the printer.
 - b. Close **latches 1, 2, and 3**.
 - c. Close the **side cover**.
5. Power on the **printer**. The printer is ready.

Cleaning the Everest printer

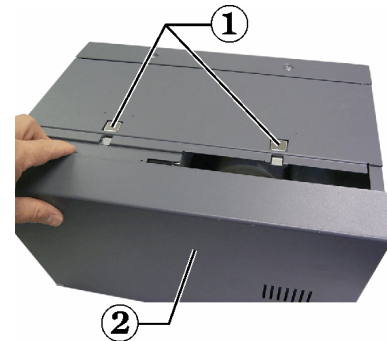
Clean the printhead

Before you begin:

Power off the **printer**

1. Access the **printhead**.
 - a. Press the **two cover latches** to release the side cover.
 - b. Lower the **side cover**.

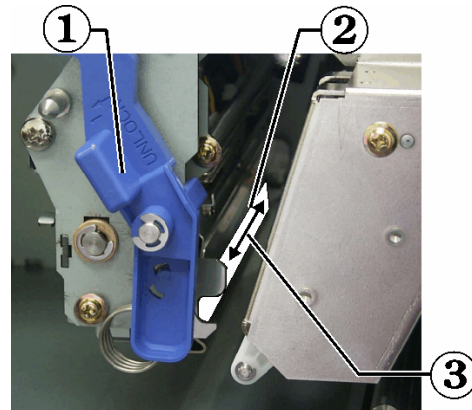
- ① Cover Latches
② Side Cover



- c. Open **latch 1**.
 - d. Remove the **print ribbon carrier**.
2. Clean the **printhead**.
 - a. Apply **isopropyl alcohol** to the **sponge swab**.
 - b. Use the **sponge swab** to wipe across the **printhead**.
 - c. Repeat as needed until the **printhead** is clean of dust and debris.
 - d. Use the **sponge swab** to remove any waxy buildup from the bar below the printhead.

❗ **Important!** Wipe the printhead from one end to the other. Do not stop wiping in the middle of the printhead.

❗ **Important!** Do not scratch the printhead. The highlighted area in the picture shows the area to clean.



- ① Latch 1
③ Printhead
② Wipe Direction

3. Prepare the **printer** for use.
 - a. Install the **print ribbon carrier**.
 - b. Close all **latches**.
 - c. Close the **side cover**.
 - d. Power on the **printer**. The printer is ready.

Clean the tacky rollers

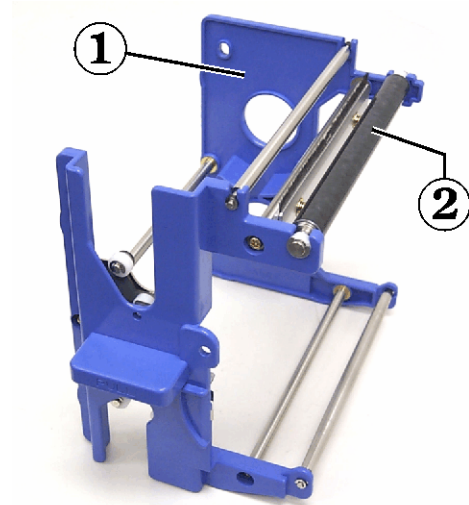
Before you begin:

Power off the **printer**

1. Remove the **print ribbon**.
2. To access the tacky rollers, remove the **supply roll** (the unused portion) of the **print ribbon** from the **print ribbon carrier**.
3. Clean the **tacky rollers**.
 - a. Apply **isopropyl alcohol** to the sponge swab.
 - b. Use the **sponge swab** to clean **tacky roller 1**.
 - c. Use the **sponge swab** to remove any waxy buildup from other parts of the **ribbon carrier**.
 - d. Reinstall the **supply roll** on the print ribbon carrier.

① Ribbon Carrier

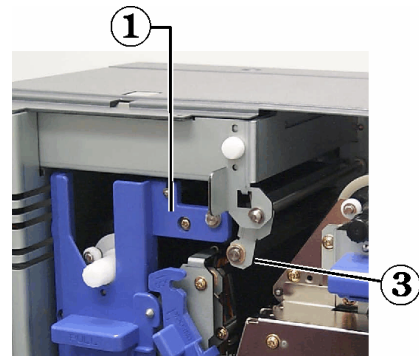
② Tacky Roller 1



- e. Inside the printer, use the **sponge swab** to wipe **tacky roller 2**.

① Ribbon Carrier

③ Tacky Roller 2



4. Prepare the **printer** for use.
 - a. Install the **print ribbon carrier**.
 - b. Close all **latches**.
 - c. Close the **side cover**.
 - d. Power on the **printer**. The printer is ready.

Clean the air filter

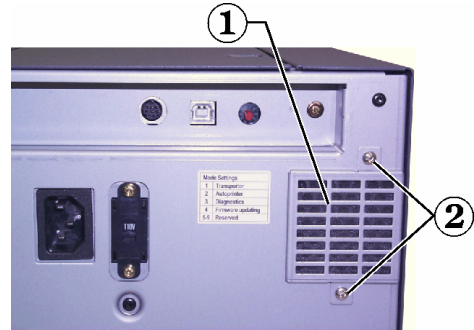
Before you begin:

Power off the **printer**

1. Remove the **air filter**.
 - a. At the rear of the Everest printer, remove the **two screws** holding the fan cover.
 - b. Remove the **air filter**.

① Fan Cover

② Screws



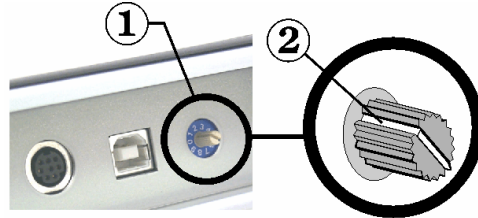
2. Clean the **air filter**.
 - a. Use water to clean the **air filter**.
 - b. Allow the **air filter** to dry.
3. Prepare the **printer** for use.
 - a. When the **air filter** is dry, place it inside the **fan cover**.
 - b. Use the **two screws** to attach the **fan cover**.
 - c. Power on the **printer**. The printer is ready.

Clean the platen roller

❗ **Important!** The platen roller should be cleaned only if you notice a diminished print quality, such as white specks on the printed disc.

Before you begin:

1. At the back of the printer, change the **mode switch** to position 3 (Diagnostic Mode).
2. Power on the **printer**.

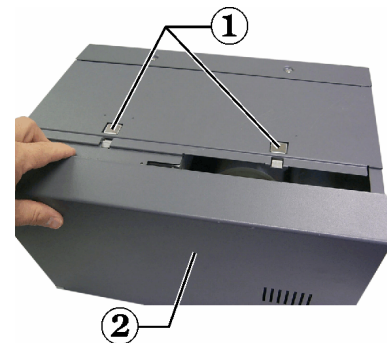


① - Mode Switch ② - Recessed Line

1. Access the **platen roller**.

- a. Press the **two cover latches** to release the **side cover**.
- b. Lower the **side cover**.

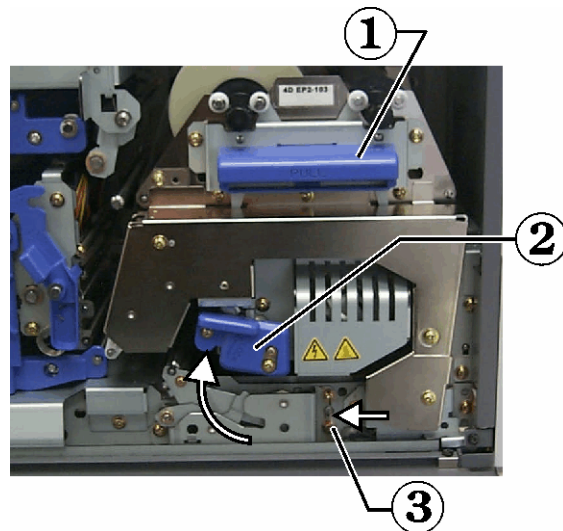
① Cover Latches
② Side Cover



- c. Open **latches 1, 2, and 3**.
- d. Remove the **print ribbon carrier**.
- e. Pull out the **retransfer ribbon carrier**.

🔑 **Note:** The retransfer ribbon carrier cannot be removed from the printer.


- ① Retransfer Ribbon Carrier
- ② Latch 2
- ③ Latch 3

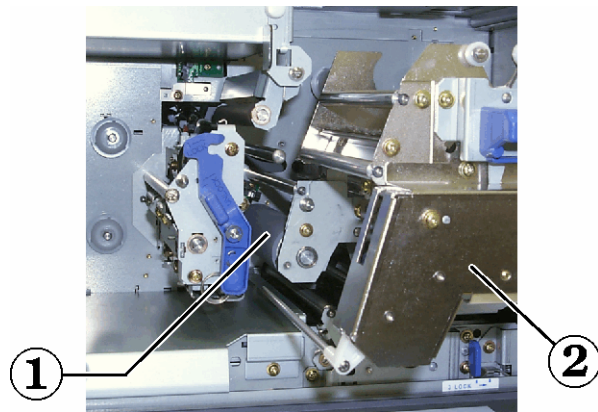


2. To access and select diagnostic 1, press and hold the **operator button** for 2 seconds. The platen roller rotates and the front panel Active LED blinks.

3. Clean the **platen roller**.

- a. Apply **isopropyl alcohol** to the **sponge swab**.
- b. Use the **sponge swab** to wipe the **platen roller**, allowing it to rotate a full turn before moving to the next area.

 **Caution:** Do not apply pressure when cleaning the platen roller with the sponge swabs. Applying pressure may damage the platen roller, leaving scratch marks on the printed disc.



① **Platen Roller**

② **Retransfer Ribbon Carrier**

4. Press the **operator button** to exit diagnostics mode.
5. Power off the **printer**.
6. Prepare the **printer** for use.

- a. Install the **print ribbon carrier**.
- b. Install the **retransfer ribbon carrier**.
- c. Close all **latches**.
- d. Close the **side cover**.
- e. Turn the **mode switch** to the correct operating position.

Model	Switch Position
Standalone Everest	0
Amigo II, Protégé II, Autostar II, DL5200, and DLN5200	1
AutoPrinter	2

- f. Power on the **printer**. The printer is ready.


Learn More

Status Messages

When the Everest printer shows a status message, the **front panel Error LED** lights, indicating that an operator action is required. The **CD Present LED** flashes an error code when an error occurs. The Everest printer status messages and recommended operator actions are provided below.


Message	Action
The Printer is idling.	None; the printer is ready to start printing.
The Heater is warming up.	None; wait until the printer has warmed up the heat roller. The printer is ready when the Active LED lights.
Waiting for the printed disc to be removed.	Remove the disc from the printer.
The installed ribbon is out.	Replace the print ribbon.
The installed retransfer ribbon is out.	Replace the retransfer ribbon.
The Printer cover is open.	Close the printer side cover.
The ribbon is not installed.	Install the Print ribbon.
The retransfer ribbon is not installed.	Install the retransfer ribbon.
Printhead release level is out of position.	Close Latch 1.
Retransfer lever is out of position.	Close Latch 2.
The Frame lock lever is out of position.	Close Latch 3.
The Transporter is not ready.	Close any open doors. Wait for the autoloader to complete the initialization process.
Transporter had problems not gripping the disc.	The printer may require an alignment to the gripper mechanism of the autoloader. See the autoloader user guide.
Transporter is paused.	Release the autoloader from the pause mode. See the autoloader user guide.
The bin is full.	The autoloader output bin is full of discs. Remove the completed discs.

Everest Printer Specifications

Item	Description
Printing Speed (including drawer cycle time)	60 seconds or less for CMY color coverage. 66 seconds for CMY with White. First print is 5 minutes, which includes warm-up time.
Printing Direction	Images are printed from a top to bottom orientation as the media is moving out of the machine.
Printing Modes	Single-color, CMY color, and CMY+White
Print Quality	Equivalent of 160 LPI (Lines Per Inch) using variable dot technology
Media Types	CD-R or DVD-R with Everest compatible coating.
Multi-Color Ribbon	<ul style="list-style-type: none"> Cyan, Magenta, and Yellow ribbon for multi-color printing. Cyan, Magenta, Yellow, and White for multi-color printing on a printed white background while allowing selected areas to have a white background. This allows the silver lacquer to be visible in selected areas.
Ribbon Capacity	Retransfer Ribbon = 1000 discs Black Ribbon = 1000 discs CMY Ribbon = 500 discs CMY-White = 375 discs
Physical Properties	9.5" H x 9.5" W x 15.35" D (24.2 cm x 24.2 cm x 39.0 cm) Depth with print drawer extended – 22.25" or 56.5 cm Left side cover open for print ribbon replacement – add additional 9.1" or 23 cm 44 pounds (20 Kg) Shipping Weight – 49 lbs
Interface	USB (Universal Serial Bus) – B type connector
Power	100-240 VAC, 50-60 Hz, 500 Watts, 3.9 Amps at 115 VAC/ 2.9 Amps at 220 VAC.
Operating Temperature	59° F to 86° F (15 ° C to 30° C)  Note: See autoloader specifications for ambient room temperatures.
Relative Humidity	30% to 70% non-condensing (dew)
System Requirements	Pentium 300 or better with 128MB, Windows 2000 or XP, USB port Macintosh OS 8.6 to 9.1
Agency Listings	<i>Emissions:</i> FCC Class B Digital Device, EN55022 Class B <i>Susceptibility:</i> EN55024, EN61000-3-2, EN61000-3-3 <i>Safety:</i> UL 1950, CAN C22.2, No 950, EN 60950 <i>Conformance Marks:</i> UL, cUL, CE


Technical support and product updates


Support for the Rimage Everest printer is available through your authorized reseller.

 **Important:** Register your Rimage Everest printer so we can notify you of upgrades as they become available.


Safety precautions


This manual and the indications on the product allow proper and safe operation. The indication marks below help protect you and other persons from injury, and equipment from damage.


 **Warning!** According to ANSI (American National Standards Institute) standards, a warning is used to indicate situations that could result in bodily injury to personnel operating or maintaining the equipment.


 **Caution:** Indicates that failure to observe this guideline could result in loss or damage to the equipment, product, software, or data.


To ensure safety, please read the precautions in the User Guide and familiarize yourself with their meaning before using the equipment.


 **Warning!** This printer has a voltage slide switch on the back of the unit. Before use, check that it is set to the correct voltage. Please do not use any voltage other than 110VAC or 220VAC. This could result in a fire and an electric shock.


 **Warning!** Do not disassemble or use tools on the printer. All service procedures should be performed by an authorized field technician, or sent in for repair. Do not service the printer with the power cord plugged in the AC outlet.


 **Warning!** The front bezel of the printer can be opened by hand. Do not insert your fingers.


 **Warning!** Do not touch the heater roller.

 **Warning!** The interior of the printer contains sharp edges.


 **Warning!** Keep out of reach of children.


 **Caution!** Any equipment that has AC line voltage, or low DC voltages, such as switches, power supplies, fuses, fans, non-stepper motors, must be replaced with Rimage-approved components to maintain the safety approval issued by UL.

 **Caution!** This printer has no power switch. Power is disconnected completely by unplugging the cable. Rimage recommends installing the printer in a position that allows immediate disconnection of the power cable. Always hold the plug when disconnecting the cable from the outlet.

 **Caution!** Do not use the printer if it is overheating, or an abnormal smell is detected. This may result in a fire and an electric shock. In case of heating or abnormal smell, immediately disconnect the cable from the outlet. Contact your dealer for repairs.

 **Caution!** This product is designed for an office environment.

 **Caution!** Allow sufficient free space for opening the CD drawer. Do not touch the CD drawer while it is moving.

 **Caution!** If the side cover is opened while power is supplied, the printer will stop. Never reach into the printer while it is operating. Do not attempt to bypass the door interlock.

Safety Testing

Model: Everest Printer

Product ID: CDPR21

Notice for USA

Federal Communications Commissions (FCC) Statement

This device complies with Part 15 of the FCC Rules. Operation is subject to the following two conditions: (1) This device may not cause harmful interference, and (2) this device must accept any interference received, including interference that may cause undesired operation.

Additional FCC Statement

Any unauthorized modification to this equipment may result in the revocation by the FCC of the user's authority to operate this equipment.

Product Safety Statement

This product complies with UL 1950 3rd Edition.

Notice for Canada

Canadian Department of Communications (DOC) Statement

This digital apparatus does not exceed the Class A limits for radio noise for digital apparatus specified in the Radio Interference Regulations of the Canadian Department of Communications.

Product Safety Statement

This product complies with CSA C22.2 No. 950.

Notice for Europe

European Standards



This product is in conformity with the EMC Directive (89/336/EEC) and the Low-Voltage Directive (73/23/EEC) through compliance with the following European standards: EN60950, EN55022 (Class B), EN55024, EN61000-3-2, EN61000-3-3. The CE mark has been affixed in accordance with the CE Marking Directive 93/68/EEC.

Rimage Everest Printer Limited 1 Year Warranty

Rimage warrants, to the original end user only, that all non-consumable parts of the Everest Printer or Everest II Printer will be free from defects in material or workmanship for 12 months, according to the following terms:

- Rimage will replace or repair, at Rimage's discretion, any non-consumable parts found defective within the Warranty period.
- Valid from the date Rimage ships the product to you.
- Factory depot repair:
 - To Rimage's location in Minnesota from a location within the US or Canada with a typical response of 15 business days.
 - To Rimage's location in Germany from a location in Europe with a typical response of 15 business days.
 - To Rimage Minnesota from a location that is not in the US or Canada with a typical response of up to 25 business days.
- Advanced Replacement, or faster response Maintenance Contracts are available for an additional fee.
- Rimage will pay ground service freight charges for components shipped to you.

The use of non-Rimage certified parts may void this warranty.

This Warranty **does not** include the following:

- Work done at the customer's location, or customer's loss of data.
- Shipment costs of equipment or components returned to the Rimage factory.
- Equipment malfunctions as a result of repairs made by technicians who are not authorized or certified by Rimage.
- Software and/or firmware enhancements released after purchase of the product.
- Equipment or parts that were tampered with, misused, neglected, or that were modified in any respect without the written consent of Rimage.
- Equipment or parts that have been damaged due to shipping or accidents, or damaged by lightning, storms, water, or power surges.
- Printer consumables including ribbons, retransfer sheets, or print head.

You may not assign this Warranty without Rimage's written consent. Rimage is the intended beneficiary of this Warranty; if there is any inconsistency between this Warranty and any other agreement included with or relating to Rimage products, this Warranty shall govern. If any term of this Warranty is illegal or unenforceable, the legality and enforceability of the remaining provisions are not affected or impaired. This Warranty is to be interpreted under the laws of the State of Minnesota, without giving effect to conflict of law rules.

Rimage must receive written notice of any claimed defect or failure to perform within five (5) days after such failure or defect is first observed. For warranty service, call Rimage at (952) 946-0004.

The Limited Warranty set forth above is Rimage's only Warranty in connection with the Rimage Everest family of Perfect Image® CD printers. All other Warranties, whether written or oral, express or implied, contractual or statutory, including, but not limited to any Warranties of merchantability or fitness for any particular purpose are specifically excluded and disclaimed. In no event shall Rimage's liability under this Warranty exceed the obligation to repair or replace, at Rimage's discretion, a Warranted product, and, without limiting the foregoing, Rimage's liability under this Warranty shall not exceed the cost of the covered product.