



# The Everest™ Printer Status Monitor

## Introduction

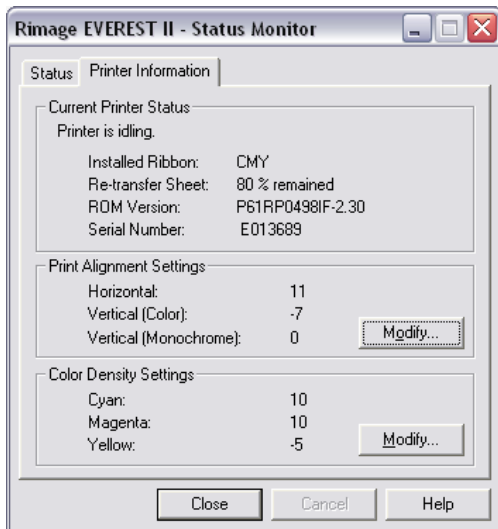
The Status Monitor utility communicates directly with the Everest printer and is useful for troubleshooting printer problems. Use the Status Monitor to learn the current printer status, ribbon information, firmware version, and serial number. The Status Monitor can also be used for adjusting the color density to help fine tune colors and to adjust the centering of the print on the disc. For more information on color density and centering, refer to the *Everest User Guide* available at [www.rimage.com/support.html](http://www.rimage.com/support.html). **Navigate:** Printers > Support - *Your Printer* > Documents tab.

## Access the Status Monitor

1. Navigate to the print settings.
  - In Windows 2000, **navigate:** Start > Settings > Printers. The *Printers* dialog box opens.
  - In Windows XP and Windows Server 2003, **navigate:** Start > Printers and Faxes. The *Printers and Faxes* dialog box opens.
2. Right click on the appropriate **Everest printer** (II, III, 600). A dropdown menu displays.
  -  **Note:** Usually, two printers are listed in the Printers folder. One is listed as Everest (II, III, 600) on COM X. The second printer does not list a COM port. The printer without the COM port listed is the one used to access the Status Monitor.
3. From the dropdown menu, select **Printing Preferences**. The *Rimage Everest Printing Preferences* dialog opens.
4. Select the **Utility** tab
5. Select **Status Monitor**.
  -  **Note:** If you are using an Everest II printer, the *Status Monitor* window opens minimized on the Task Bar. Select the minimized window to open the Status Monitor.

In the *Status Monitor* window, the **Printer Information** tab provides the current printer status, ribbon information, firmware version, and serial number. The Everest III and 600 Status Monitor has additional information under the **Status** tab.

**Everest II Status Monitor**



**Everest III and 600 Status Monitor**

