

## Document History

Version	Release Date	Reason for issue
A	09/15/2006	Initial release
B	02/17/2009	Updated Product Identification information

## Company


**Company name:** Rimage® Corporation

**Company logo:**





**R I M A G E**®

**Company address:** 7725 Washington Avenue South  
Minneapolis, Minnesota 55439  
U.S.A.  
<http://www.rimage.com>

 **Note:** This Waste from Electric and Electronic Equipment (WEEE) Recycling Passport provides information for treatment facilities. It is not a disassembly instruction. It is for Rimage marked products only. Original Equipment Manufacturer (OEM) products are identified where applicable. Contact the OEM for selective treatment information.

*The information presented in this document does not form part of any quotation or contract, is believed to be accurate, is offered at no charge, and may be changed without notice. No liability will be accepted by Rimage for any consequences of its use. Publication thereof does not convey nor imply any license, patent, or other industrial or intellectual property rights.*

## Product Identification

<b>Product name</b>	Rimage 480i Model: CDPR4	
<b>Description</b>	Thermal inkjet printer	
<b>WEEE Category</b>	Category 3, IT & Telecommunication Equipment	
<b>Product weight and dimensions</b>	17.0 lbs (7.7 kg)	
	<b>Height</b>	6.0 in (15.2 cm)
	<b>Width</b>	15.8 in (40.1 cm)
	<b>Depth</b>	15.0 in (38.1 cm)
<b>Product identification</b>		

## Product Structure

### Location of Subassemblies

**Note:** Duplicate identification numbers indicate that the same part is identified on multiple views of the Rimage 480i.



Fig. 1 Front View



Fig. 2 Rear View

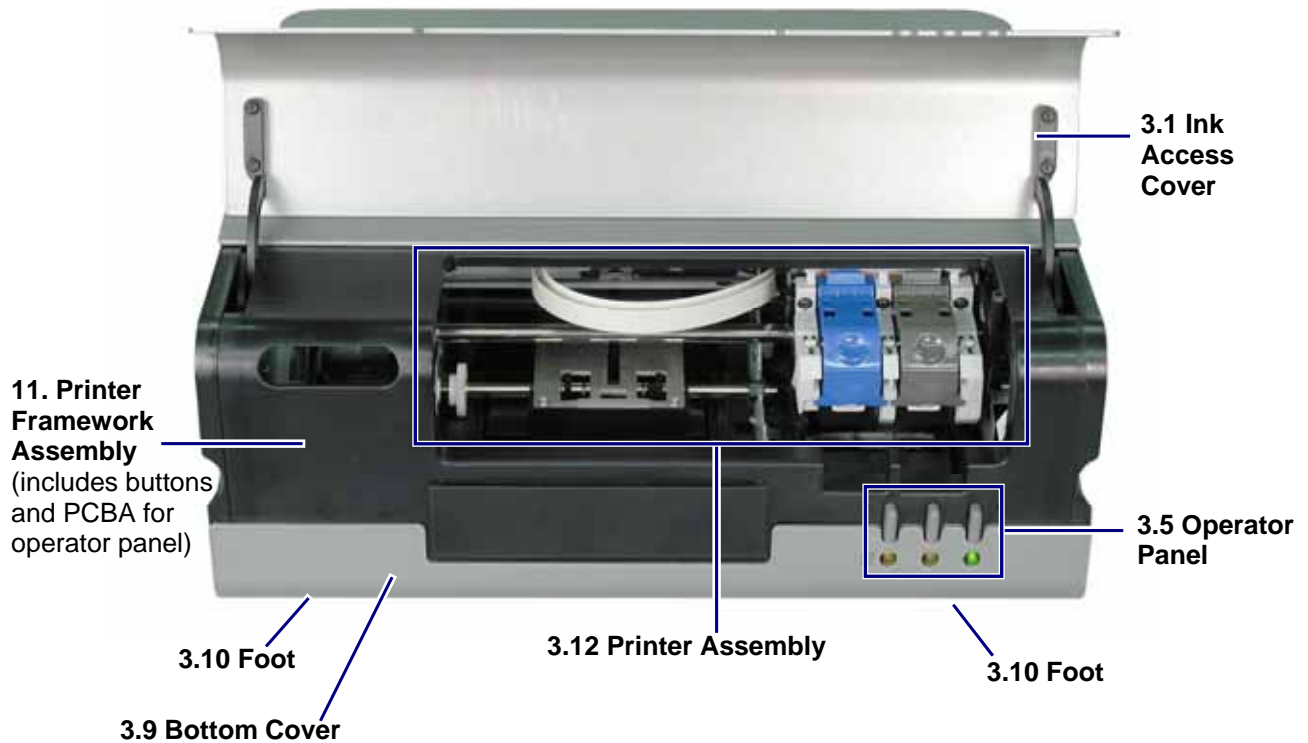


Fig. 3 Ink Access Cover Open

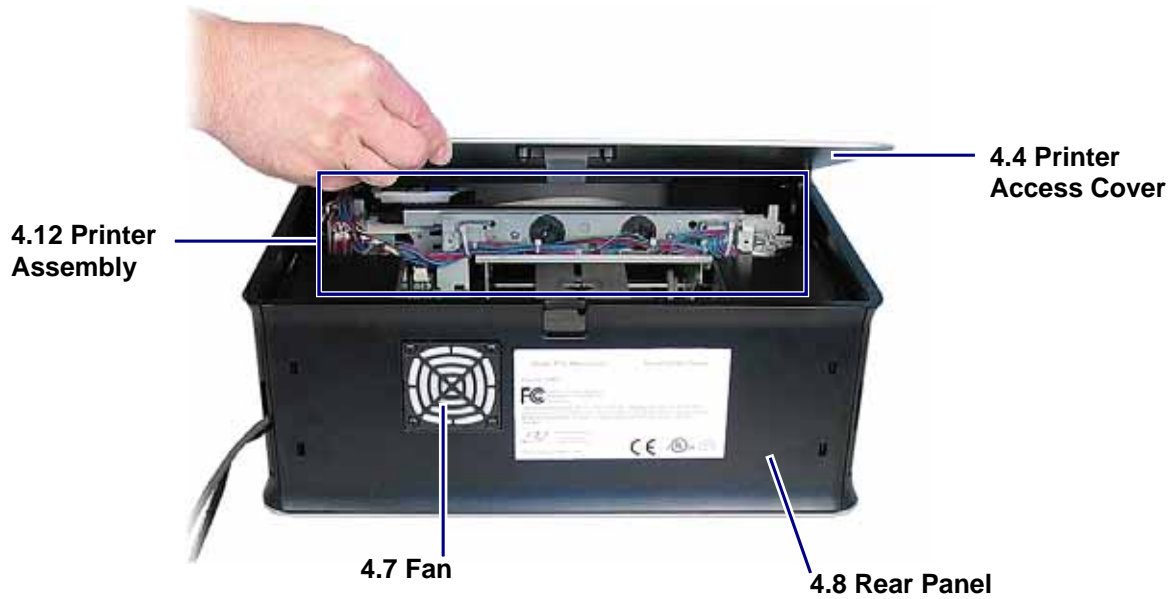
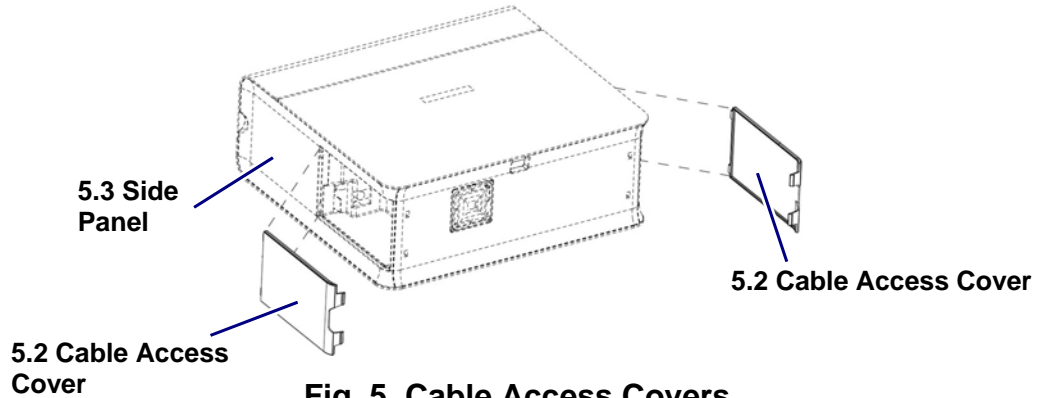


Fig. 4. Printer Access Cover Open



## Subassembly Diagrams

### Subassembly – #1



Item 2 – Cable Access Cover (see figures 1.2 and 5.2 )  
Plastic may contain brominated flame retardants

### Subassembly – #2



Item 3 – Side Panel (see figures 1.3 and 5.3 )  
Plastic may contain brominated flame retardants

### Subassembly – #3



Item 8 – Rear Panel (see figure 2.8)  
Plastic may contain brominated flame retardants.

## Subassembly – #4



Item 11 – Printer Framework Assembly (see figure 3.11)

Plastic may contain brominated flame retardants.

## Subassembly – #5

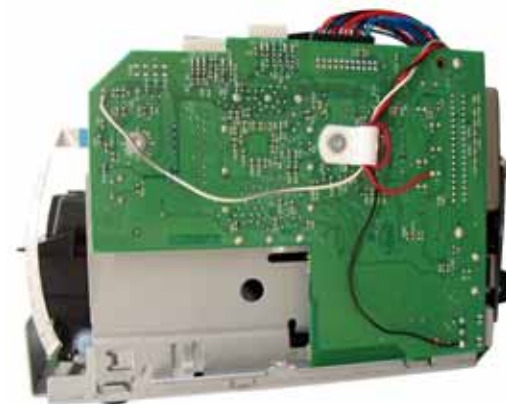


Item 12 – Printer Assembly (see figure 3.12 and 4.12)

OEM component. Printed circuit board(s); pre-RoHS board may contain lead.

Boards marked with Pb-free symbol are RoHS compliant.

## Subassembly – #6

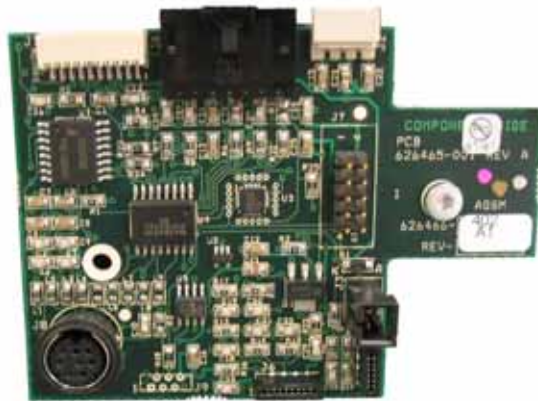


Item 15 – PCBA (see figure 3.11)

Printed circuit board(s); pre-RoHS board may contain lead.

Boards marked with Pb-free symbol are RoHS compliant.

## Subassembly – #7

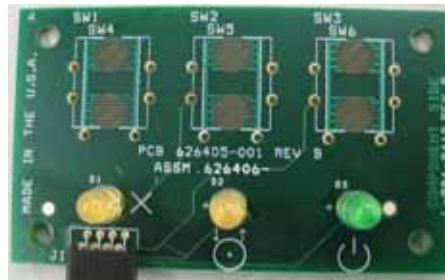


Item 11 – Printer Control Board (see figure 3.11)

Printed circuit board(s); pre-RoHS board may contain lead.

Boards marked with Pb-free symbol are RoHS compliant.

## Subassembly - #8



Item 5 – Printer Control Panel board (see figures 1.5 and 5.5)

Printed circuit board; pre-RoHS board may contain lead.

Boards marked with Pb-free symbol are RoHS compliant.

## Subassembly - #9



Item 6 – Disc sensor board (see figure 1.6)

Printed circuit board; pre-RoHS board may contain lead.

Boards marked with Pb-free symbol are RoHS compliant.



## Subassembly - #10



Item 6 – Printer Tray Assembly (see figure 1.6)  
Plastic may contain brominated flame retardants.

## External cables – may be included



USB Cable



Power Cord



Power Supply

## Reportable Materials

### WEEE Annex II Reportable Materials

Material	Location
Polychlorinated biphenyl - containing capacitors	Absent
Mercury-containing components, such as switches or backlighting lamps	Absent
Batteries	Absent
Printed circuit boards of mobile phones generally, and of other devices if the surface of the printed circuit board is greater than 10 square centimeters	<ul style="list-style-type: none"> <li>• Printer Control board (Fig. 3.11)</li> <li>• Disc Sensor Board (Fig. 1.6)</li> <li>• PCBA (Fig. 3.11)</li> <li>• Printer Assembly (Fig. 3.12 and 4.12)</li> </ul>
Toner cartridges, liquid and pasty, as well as color toner	Absent
Plastic containing brominated flame retardants	<p>May be present</p> <ul style="list-style-type: none"> <li>• Printer Tray Assembly (Fig. 1.6)</li> <li>• Printer Framework Assembly (Fig. 3.11)</li> <li>• Rear Panel (Fig. 2.8)</li> <li>• Side Panel (Fig. 1.3 and 5.3 )</li> <li>• Cable Access Cover (Fig. 1.2 and 5.2 )</li> </ul>
Asbestos waste and components which contain asbestos	Absent
Cathode ray tubes	Absent
Chlorofluorocarbons (CFC), hydrochlorofluorocarbons (HCFC) or hydrofluorocarbons (HFC), hydrocarbons (HC)	Absent
Gas discharge lamps	Absent
Liquid crystal displays (together with their casing where appropriate) of a surface greater than 100 square centimeters and all those back-lighted with gas discharge lamps	Absent
External electric cables	May be included – see product identification photo
Components containing radioactive substances, or materials that become radioactive as a result of the function of the product, such as ionising radiation	Absent

# WEEE Recycling Passport

Product: Rimage 480i

website: [www.rimage.com](http://www.rimage.com)

Material	Location
Electrolytic capacitors containing substances of concern (height > 25 mm, diameter > 25 mm or proportionately similar volume)	Absent
Equipment containing gases that are ozone-depleting or have a global warming potential (GWP) above 15, such as those contained in foams and refrigeration circuits.	Absent
Cadmium (Cd)	Absent
Hexavalent Chromium (Cr VI)	Absent
Lead (Pb)	Pre-RoHS = Yes, on all PCBs and cables Post-RoHS = No Boards marked with Pb-free symbol are RoHS compliant.
Mercury (Hg)	Absent
Polybrominated Biphenyls (PBB)	Absent
Polybrominated Diphenyl Ethers (PBDE)	Absent