

Document History

Version	Release Date	Reason for issue
A	09/15/2006	Initial release
B	02/17/2009	Updated Product Identification information
C	10/8/2012	Updated Product Identification information

Company


Company name: Rimage® Corporation

Company logo:





R I M A G E®

Company address: 7725 Washington Avenue South
Minneapolis, Minnesota 55439
U.S.A.
<http://www.rimage.com>

 **Note:** This Waste from Electric and Electronic Equipment (WEEE) Recycling Passport provides information for treatment facilities. It is not a disassembly instruction. It is for Rimage marked products only. Original Equipment Manufacturer (OEM) products are identified where applicable. Contact the OEM for selective treatment information.

The information presented in this document does not form part of any quotation or contract, is believed to be accurate, is offered at no charge, and may be changed without notice. No liability will be accepted by Rimage for any consequences of its use. Publication thereof does not convey nor imply any license, patent, or other industrial or intellectual property rights.

Product Identification

Product name	Rimage 2000i Model: RAS16	
Description	Desktop product with 2 recorders and an internal printer	
WEEE Category	Category 3, IT & Telecommunication Equipment	
Product weight and dimensions	62.0 lb (28.12 kg) Height 21.0 in (53.3 cm) Width 15.8 in (40.0 cm) Depth 20.0 in (50.8 cm)	
Product identification		

Product Structure

Location of Subassemblies

Note: Duplicate identification numbers indicate that the same part is identified on multiple views of the Rimage 2000i.

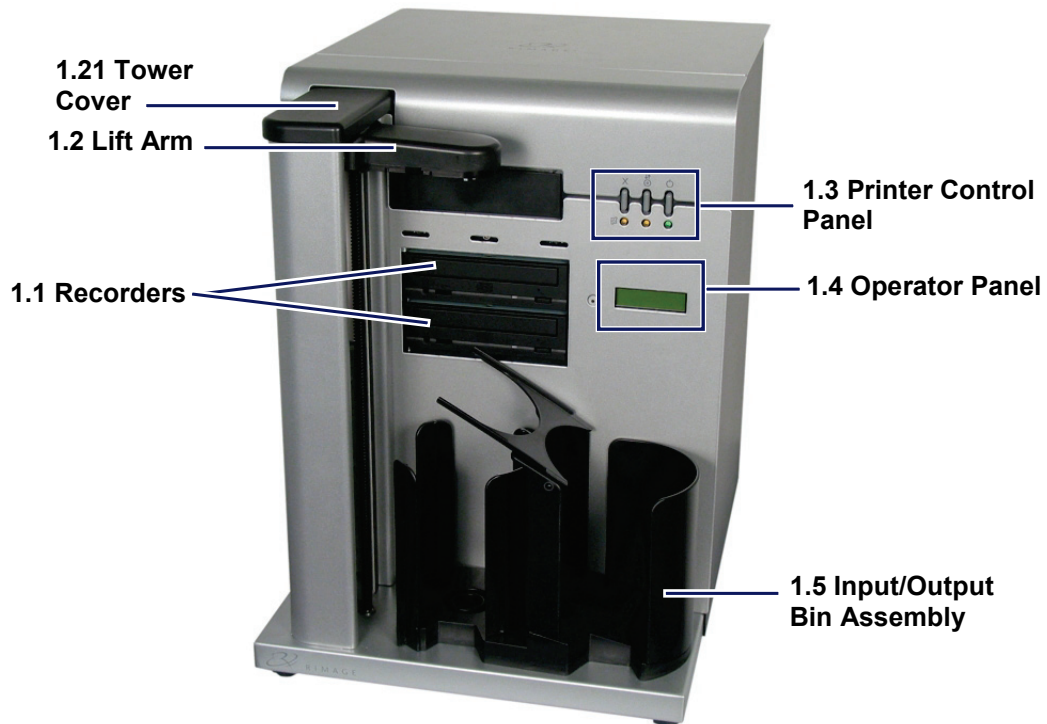


Fig. 1 2000i Front View

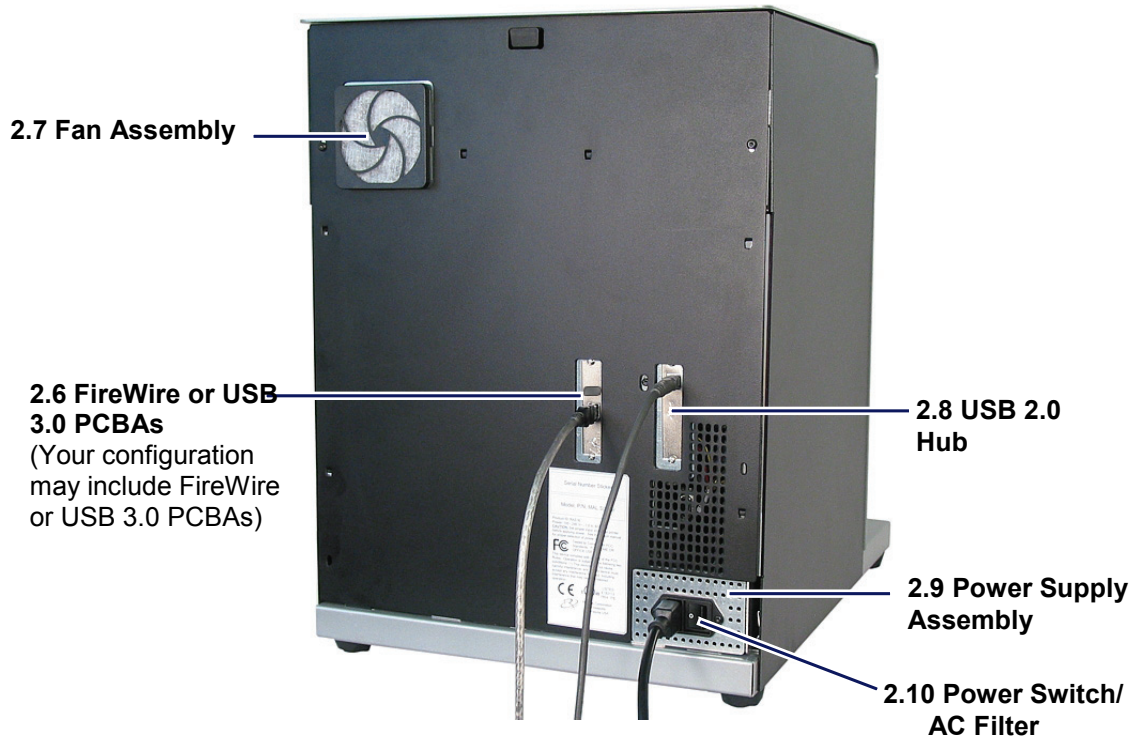


Fig. 2 2000i Rear View

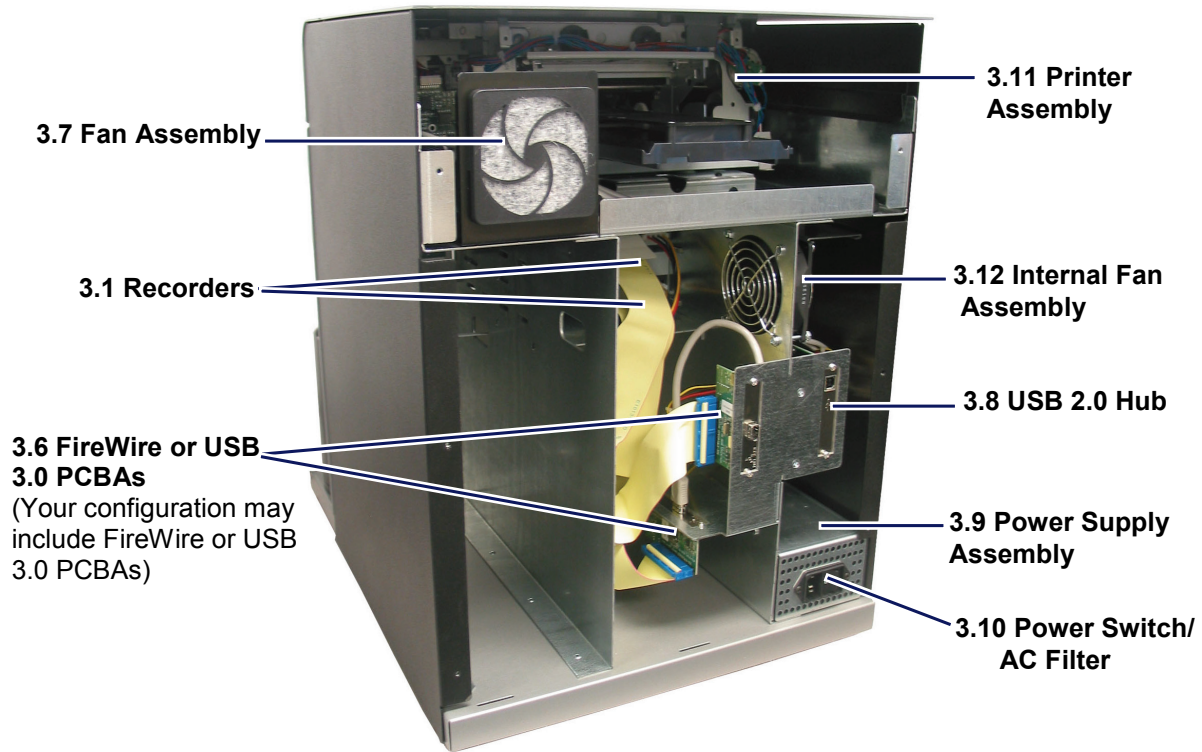


Fig. 3 2000i Inside Rear View

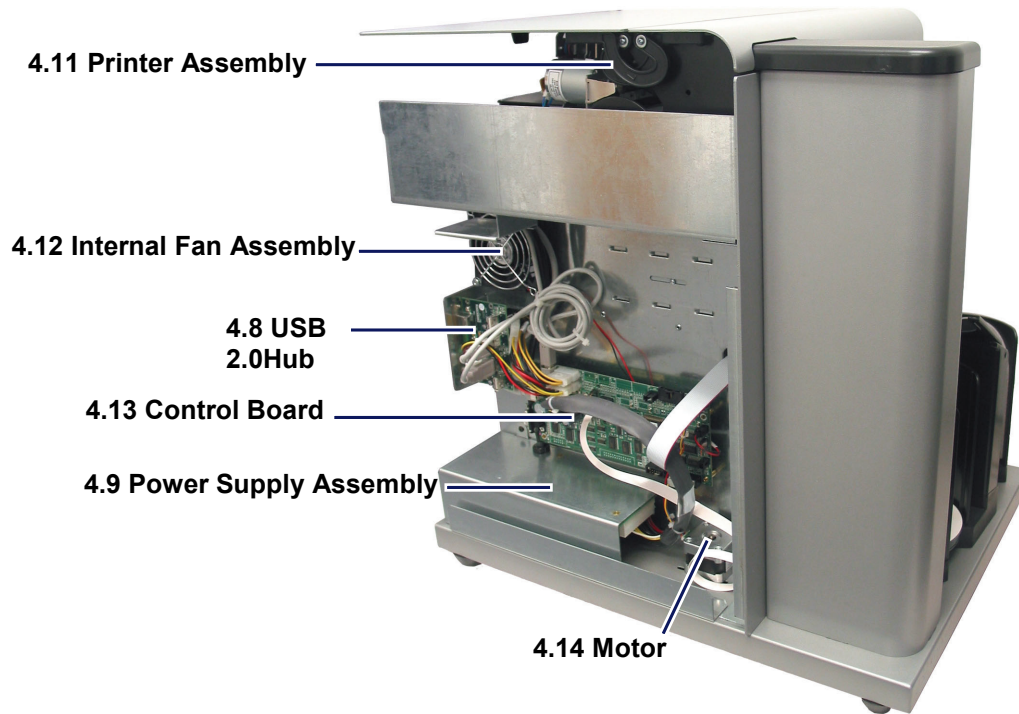


Fig. 4 2000i Inside Left View

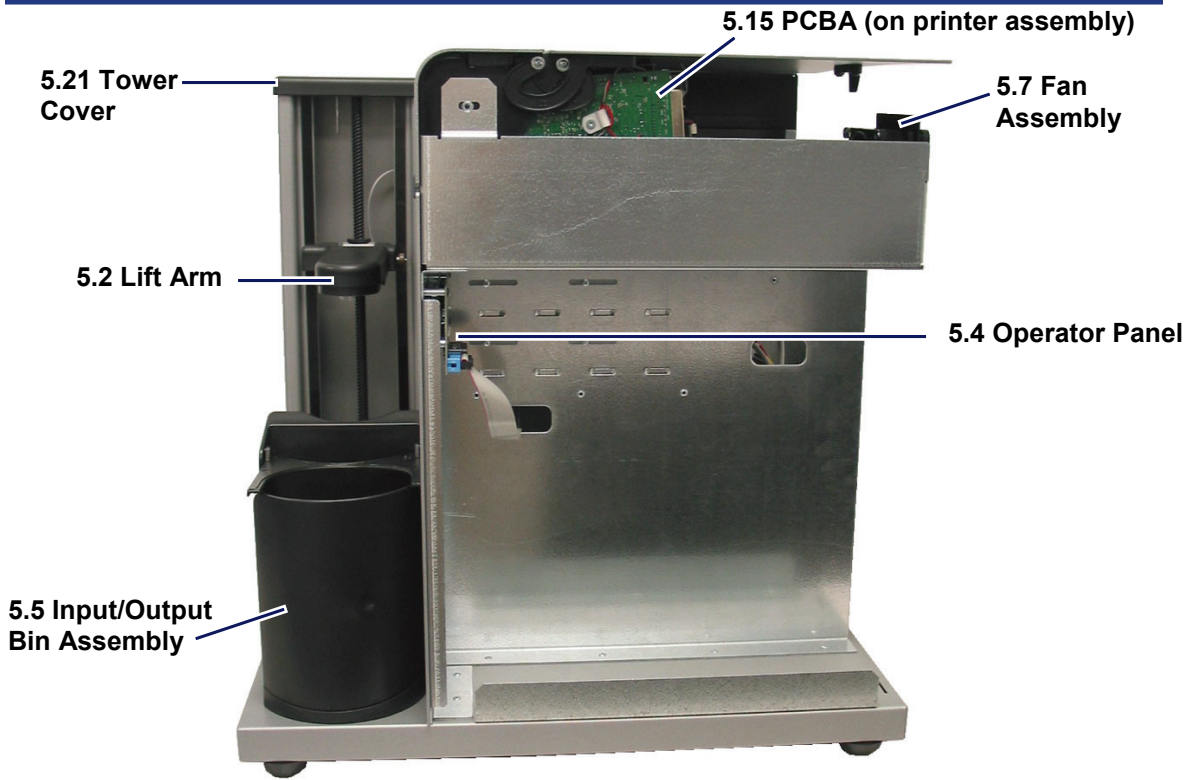


Fig. 5 2000i Inside Right View

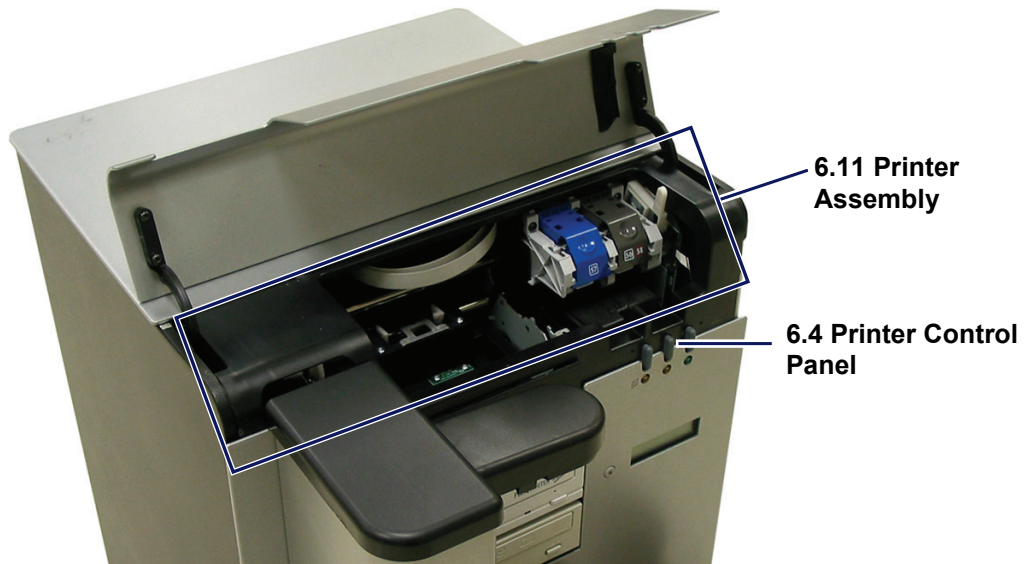


Fig. 6 Ink Access Door Open

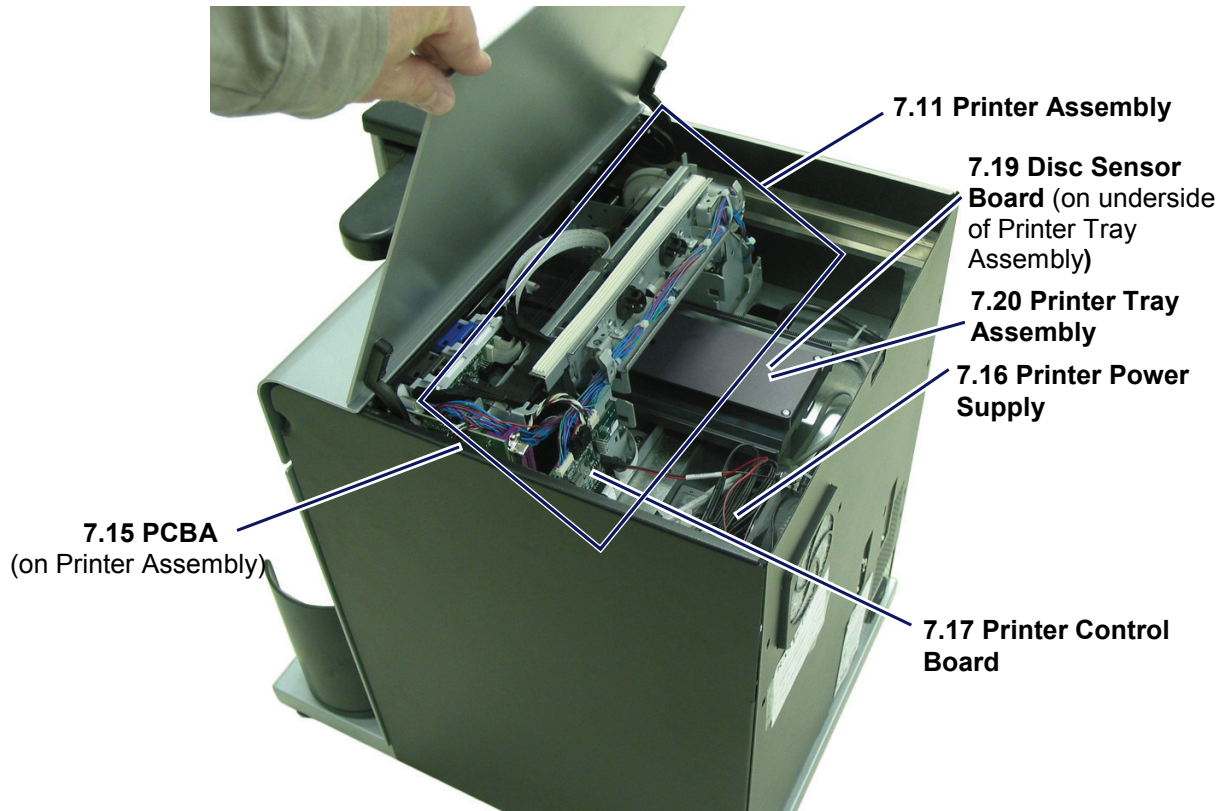


Fig. 7 Rear Cover Open

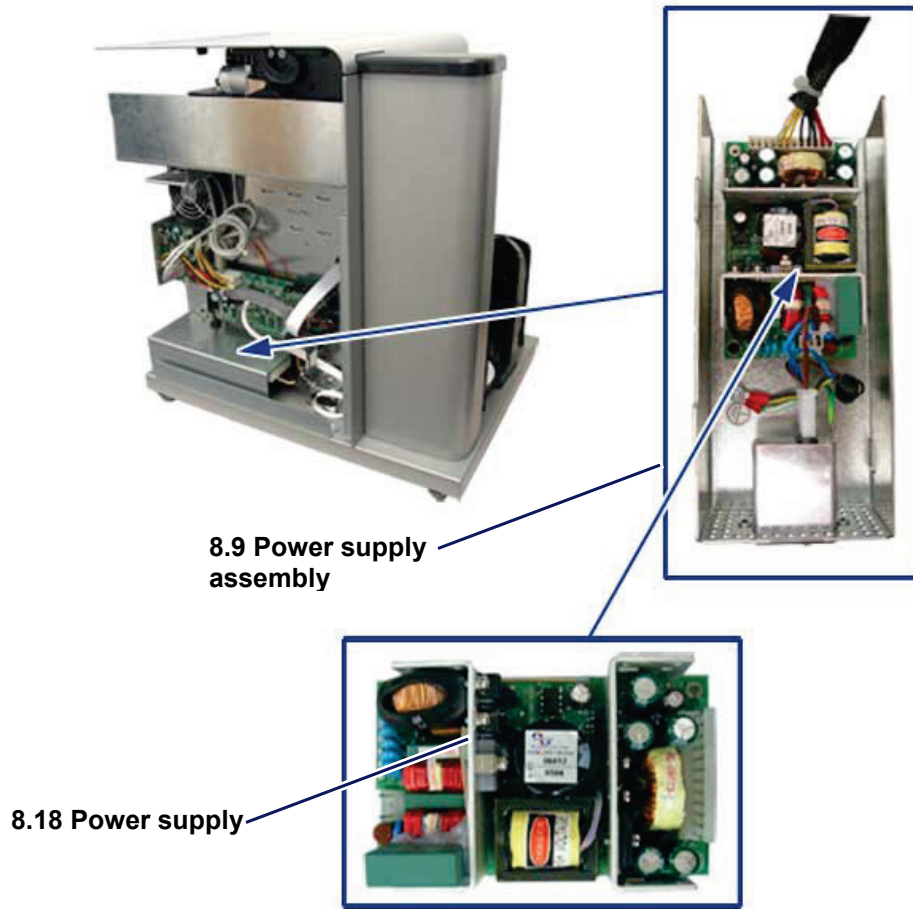


Fig. 8 2000i Power Supply Internal View

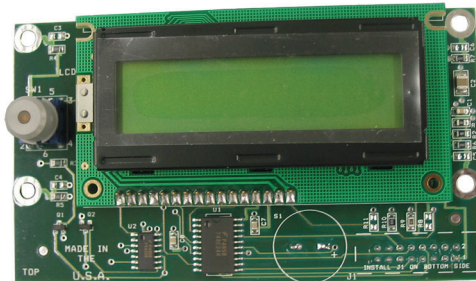
Subassembly Diagrams

Subassembly – #1



Item 5 – Input/Output bin (see figure 1.5 and 5.5)
Plastic may contain brominated flame retardants

Subassembly – #2



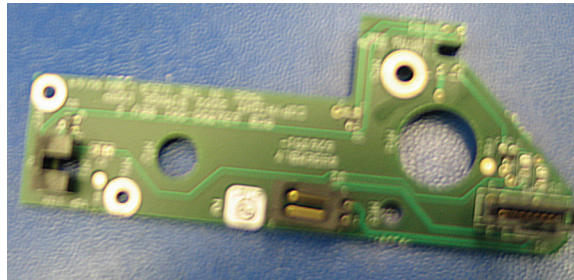
Item 4 – LCD Display (see figure 1.4 and 5.4)
Printed circuit board; pre-RoHS board may contain lead.
Boards marked with Pb-free symbol are RoHS compliant.

Subassembly – #3



Item 2 – Lift arm cover (see figure 1.2 and 5.2)
Plastic may contain brominated flame retardants.

Subassembly – #4



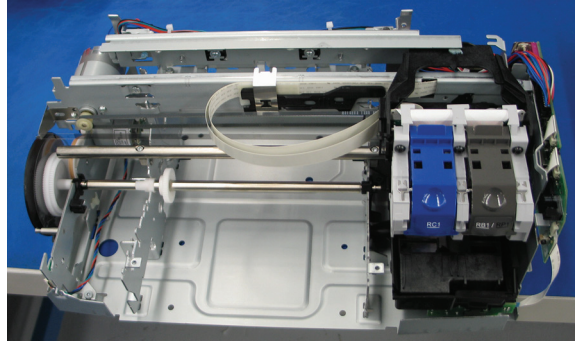
Item 4 – Lift arm board (see figure 1.1)
Printed circuit board; pre-RoHS board may contain lead.
Boards marked with Pb-free symbol are RoHS compliant.

Subassembly – #5



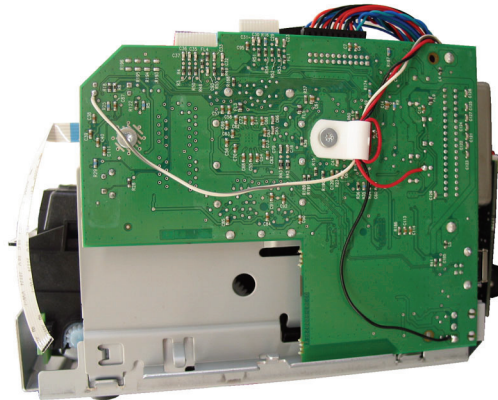
Item 1 – Recorder (see figure 1.1)
OEM component. Printed circuit board; pre-RoHS board may contain lead.
Boards marked with Pb-free symbol are RoHS compliant.

Subassembly – #6



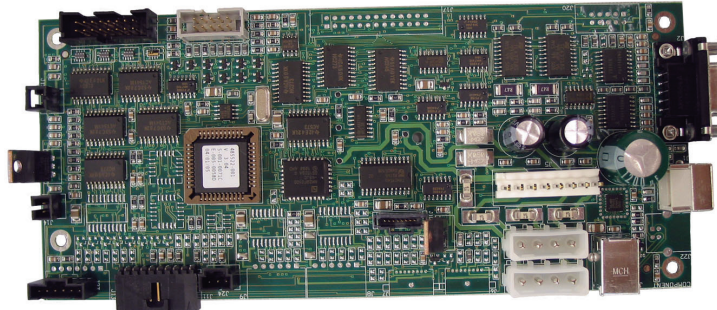
Item 11 – Printer Assembly (see figure 6.11 and 7.11)
OEM component. Printed circuit board(s); pre-RoHS board may contain lead.
Boards marked with Pb-free symbol are RoHS compliant.

Subassembly – #7



Item 15 – PCBA (see figure 5.15 and 7.15)
Printed circuit board(s); pre-RoHS board may contain lead.
Boards marked with Pb-free symbol are RoHS compliant.

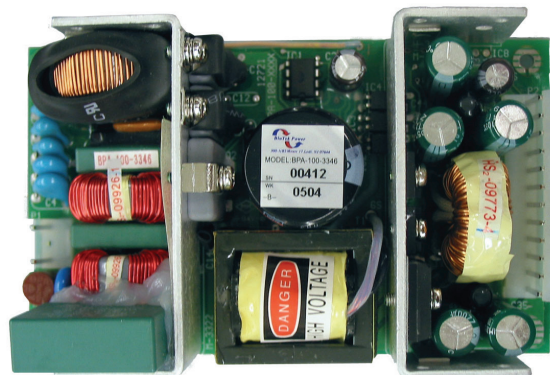
Subassembly - #10



Item 13 – Control Board (see figure 4.13)

Printed circuit board; pre-RoHS board may contain lead.
Boards marked with Pb-free symbol are RoHS compliant.

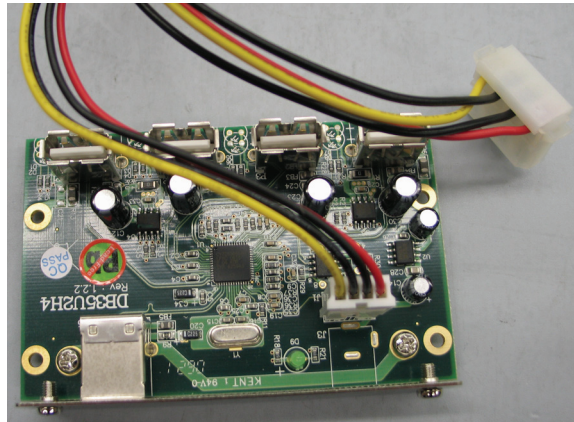
Subassembly – #11



Item 18 –2000i Power Supply (see figures 3.9, 4.9, and 9.18)

Printed circuit board(s); pre-RoHS board may contain lead.
Boards marked with Pb-free symbol are RoHS compliant.

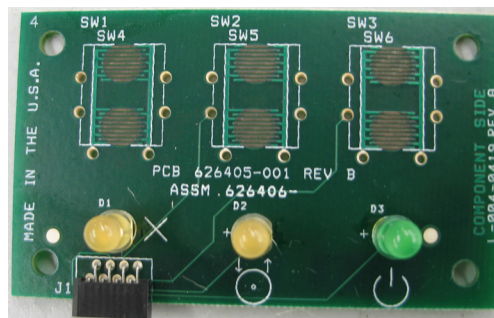
Subassembly - #12



Item 8 – USB2 Hub PCBA (see figures 2.8 and 3.8)

Printed circuit board; pre-RoHS board may contain lead.
Boards marked with Pb-free symbol are RoHS compliant.

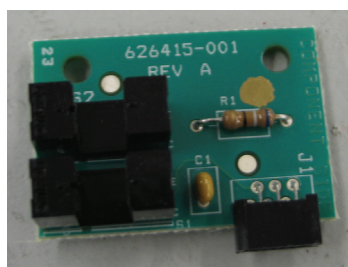
Subassembly - #13



Item 3 – Printer Control Panel board (see figure 1.3)

Printed circuit board; pre-RoHS board may contain lead.
Boards marked with Pb-free symbol are RoHS compliant.

Subassembly - #14



Item 19 – Disc sensor board (see figure 7.19)

Printed circuit board; pre-RoHS board may contain lead.
Boards marked with Pb-free symbol are RoHS compliant.

Subassembly - #15



Item 20 – Printer Tray Assembly (see figure 7.20)
Plastic may contain brominated flame retardants.

Subassembly - #16



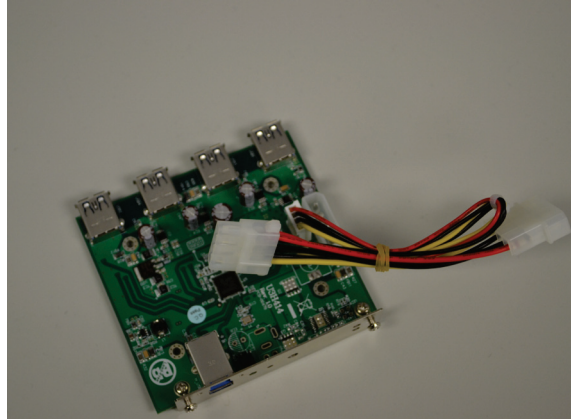
Item 11 – Printer Framework Assembly (see figures 3.11 and 4.11)
Plastic may contain brominated flame retardants.

Subassembly - #17



Item 21 – Tower Cover (see figures 1.21 and 5.21)
Plastic may contain brominated flame retardants.

Subassembly - #18



Item 22 – USB3 PCBA (see figures 2.6 and 3.6)

Printed circuit board; pre-RoHS board may contain lead.
Boards marked with Pb-free symbol are RoHS compliant.

External cables – may be included



FireWire Cable
(some configurations include the firewire PCBAs)



DIN Cable



USB Cable



Power Cord

Reportable Materials

WEEE Annex II Reportable Materials

Material	Location
Polychlorinated biphenyl - containing capacitors	Absent
Mercury-containing components, such as switches or backlighting lamps	Absent
Batteries	Absent
Printed circuit boards of mobile phones generally, and of other devices if the surface of the printed circuit board is greater than 10 square centimeters	<ul style="list-style-type: none"> • Lift arm control board (Fig. 1.2 and 5.2) • LCD display (Fig 1.3) • Recorders (Fig. 1.1) • Control board (Fig. 4.13) • Firewire boards (Fig. 2.6; Fig. 3.6) • USB 3 boards (Fig. 2.6; Fig. 3.6) • USB2 Hub PCBA (Fig. 2.8; Fig. 3.8) • Power supply (Fig. 3.9, Fig 4.9, and 9.18) • Printer power supply (Fig. 7.16) • Printer assembly (Fig. 6.11 and 7.11) • PCBA (Fig. 5.15 and 7.15) • Printer Control Board (Fig. 7.17) • Printer control panel (Fig. 1.3) • Disc sensor board (Fig. 7.19)
Toner cartridges, liquid and pasty, as well as color toner	Absent
Plastic containing brominated flame retardants	<p>May be present</p> <ul style="list-style-type: none"> • Lift arm cover (Fig. 1.2) • Disc input/output bin (Fig. 1.5 and 5.5) • Printer tray assembly (Fig. 7.20) • Printer Framework Assembly (Fig. 3.11 and 4.11) • Tower Cover (Fig. 1.21 and 5.21)
Asbestos waste and components which contain asbestos	Absent
Cathode ray tubes	Absent

WEEE Recycling Passport

Product: Rimage 2000i and 2000i Series II

website: www.rimage.com

Material	Location
Chlorofluorocarbons (CFC), hydrochlorofluorocarbons (HCFC) or hydrofluorocarbons (HFC), hydrocarbons (HC)	Absent
Gas discharge lamps	Absent
Liquid crystal displays (together with their casing where appropriate) of a surface greater than 100 square centimeters and all those back-lighted with gas discharge lamps	Absent
External electric cables	May be included – see product identification photo
Components containing radioactive substances, or materials that become radioactive as a result of the function of the product, such as ionising radiation	Absent
Electrolytic capacitors containing substances of concern (height > 25 mm, diameter > 25 mm or proportionately similar volume)	Absent
Equipment containing gases that are ozone-depleting or have a global warming potential (GWP) above 15, such as those contained in foams and refrigeration circuits.	Absent
Cadmium (Cd)	Absent
Hexavalent Chromium (Cr VI)	Absent
Lead (Pb)	Pre-RoHS = Yes, on all PCBs and cables Post-RoHS = No Boards marked with Pb-free symbol are RoHS compliant.
Mercury (Hg)	Absent
Polybrominated Biphenyls (PBB)	Absent
Polybrominated Diphenyl Ethers (PBDE)	Absent