

Update Recorder Firmware Using Rimage System Manager

The procedure in this document explains how to update the recorder firmware on the Rimage Producer™ and Professional™ series of autoloaders, as well as on Rimage 2000i autoloaders that use OfficeNet Software Suite. Firmware updates keep your autoloader running at peak performance. Updates can be performed from any networked PC on which Rimage System Manager is installed.

 **Notes:**


- The Producer III and Producer IIN series include the 6100, 6100N, 7100, 7100N, 8100, and 8100N. The Producer II series includes the Amigo II, Protégé II, and Autostar II. The Professional series includes the 5300N, 5100N, DLN5200, and DL5200.
- The Rimage 2000i autoloader can use either OfficeNet or Rimage 2000i Software. For instructions on how to update the recorder firmware on autoloaders using Rimage 2000i Software, refer to the *Update Recorder Firmware for the Rimage 2000i and 360i* document available at www.rimage.com/support.
- Unless otherwise indicated, all Windows navigation statements in this document are Windows XP paths. Windows 2000 and Windows Vista paths may differ slightly.


Procedure

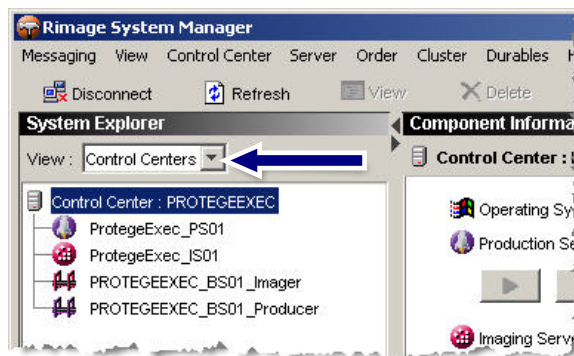
This procedure uses Rimage System Manager versions 6.4 and 6.5 to update the recorder firmware. Rimage System Manager is installed during a typical installation of the Producer and OfficeNet Software Suites.

For Software Suite 7.0 or higher, refer to page 4.

Procedure for Producer or OfficeNet Software Suite Versions 6.4 and 6.5

1. Check your current firmware version.
 - a. Select  to open Rimage System Manager.
 - b. From the **Messaging Server** dropdown list, select the appropriate Messaging Server.

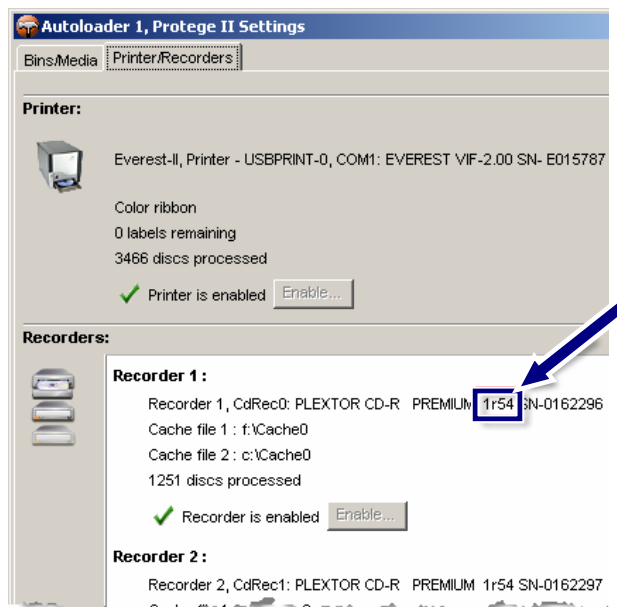
 **Tip:** The default is **This Computer**.
 - c. Select **OK**. A message displays that you are being connected without administrative rights.
 - d. Select **OK**. Rimage System Manager opens.
 - e. From the **View** dropdown list, select **Control Centers**.
 - f. From the *System Explorer* panel, select the appropriate **Control Center**.



- g. In the right panel of Rimage System Manager, select the **Settings** button of the desired autoloader. The *Autoloader Settings* window displays.




- h. Select the *Printer/Recorders* tab.
- i. Locate the **recorder firmware version**. The current firmware version is located before the recorder serial number, as shown.
- j. Select **OK** to close the autoloader settings.



2. Locate the latest recorder firmware version at www.rimage.com/support.

- a. From the **Support** menu select: **Product Series > Your Product > Software, Firmware & Service Packs** tab.

 **Note:** The latest firmware versions are listed under the **Firmware** heading.

- b. If the recorder firmware listed on the **Software, Firmware & Service Packs** tab is newer than your current recorder firmware, download the firmware. Refer to **step 3**.

If the firmware version listed is the same as your recorder's current version, no further action is needed. Periodically check the Rimage Support site for firmware version updates.

Protege II Support



At Rimage, we know how important support is to our users.

We strive to provide you with as much information as possible to set up, use and troubleshoot your autoloaders and printers. From here you can download software, service packs, and firmware, as well as view our award winning user documentation and service information. Select a tab below to learn more.

For He
» Ca
1-2
» Vis
» Co

End of Service for some Protege II autoloaders

Software, Firmware & Service Packs | **User Manuals** | Repair | Service

Select a link below for more information on downloading the latest software, service pack, or firmware for your product. From the download access release notes and download instructions.


Important! Before downloading any type of software:





- » Follow your organization's upgrade policies and procedures.
- » Ensure prior system backup to allow from recovery, should any problems arise, and perform a system test before full implementation in p
- » If your Rimage system is part of an integrated solution, contact your solution provider to ensure your software version is compatible with hardware components of the system.

Firmware	Version	Date
Producer II Autoloader with Everest Printer	v. 3.604	March 5, 2009
Producer II Autoloader with Prism Printer	v. 3.604	March 5, 2009
Everest II Printer	v. 2.60	March 1, 2008
Prism Printer	v. 5.201	June 16, 2006
760A Recorder	v. 6.06	July 17, 2007
716A Recorder	1.59	November 21, 2006
Service Packs		
Producer Software Suite v. 8.0 - 8.1	SP 1	October 10, 2008


3. Download the latest firmware version.


- a. At the control center, create a **new folder** labeled *Updated Firmware* on the C:\ drive.
- b. From the **Software, Firmware & Service Packs** tab, select the **link** to the latest firmware version. The *Firmware Download* page displays.
- c. Select the **Download Now** button.
- d. Accept the **Rimage Firmware License Agreement**. The *File Download* dialog box displays.
- e. Save the **.zip file** to the **Updated Firmware folder** that you created in step 3a.

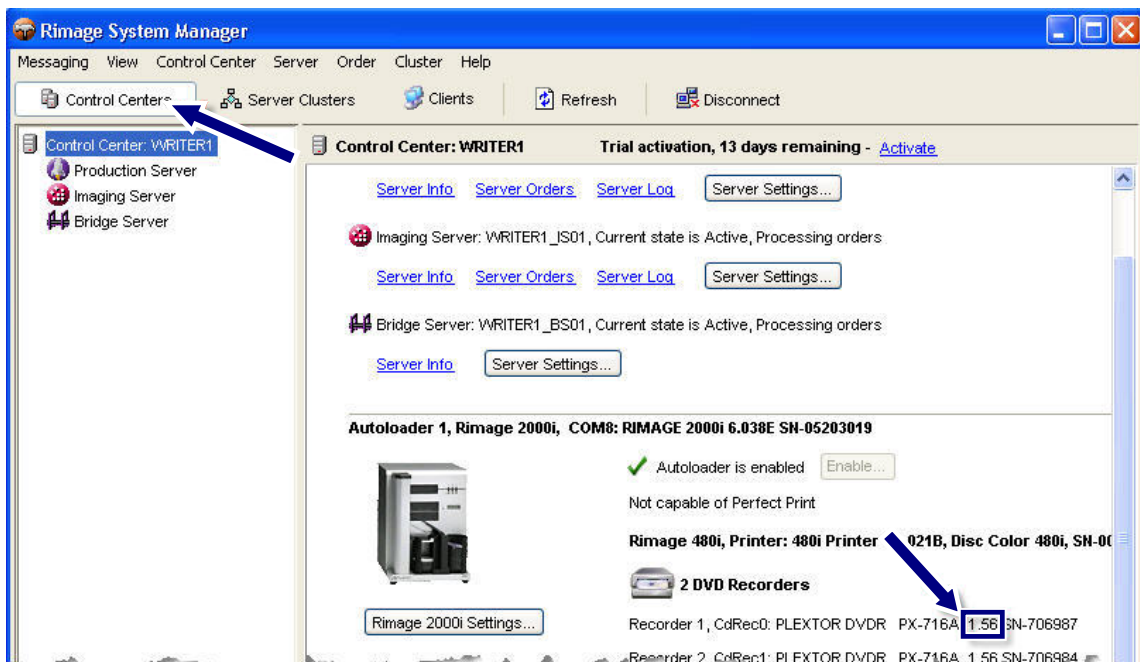
4. Update the recorder with the latest firmware version.
 - a. From the *System Explorer* panel, select . The right panel displays Production Server information.

 **Note:** The name of the Production Server is displayed to the right of the Production Server icon.
 - b. Select . Production Server pauses.
 - c. Repeat **steps a – b** for each Production Server.
 - d. From the **Control Center** menu, select **Update Recorder Firmware**.
 - e. Browse and select the **firmware file** in the C:\Updated Firmware folder.
 - f. Select **OK**. Similar recorders are updated.
5. Restart Production Server.
 - a. Select  for each paused Production Server. Production Server stops.
 - b. Select  for each stopped Production Server. Production Server starts.

Procedure for Producer or OfficeNet Software Suite Version 7.0 or Higher


1. Check your current firmware version.
 - a. Select  to open Rimage System Manager.
 - b. From the **Messaging Server** dropdown list, select the appropriate Messaging Server.

 **Tip:** The default is **This Computer**.
 - c. Select **OK**. If an administrator password was added to Rimage System Manager, a message displays that you are being connected without administrative rights.
 - d. Select **OK**. Rimage System Manager opens.
 - e. From the toolbar, select **Control Centers** as shown below.
 - f. Locate the **recorder firmware version**. The current firmware version is located before the recorder serial number as shown below.



1. Locate the latest recorder firmware at www.rimage.com/support.


- a. From the **Support** menu select: **Product Series > Your Product > Software, Firmware & Service Packs** tab.

 **Note:** The latest firmware versions are listed under the **Firmware** heading.

- b. If the recorder firmware listed on the **Software, Firmware & Service Packs** tab is newer than your current recorder firmware, download the firmware. Refer to **step 3**.

If the firmware version listed is the same as your recorder's current version, no further action is needed. Periodically check the Rimage Support site for firmware version updates.

Rimage 2000i Support



At Rimage, we know how important support is to our users.

We strive to provide you with as much information as possible to set up, use and troubleshoot your autoloaders and printers. From here you can download software, service packs, and firmware, as well as view our award winning user documentation and service information. Select a tab below to learn more.

End of Service for some Rimage 2000i autoloaders

Software, Firmware & Service Packs
User Manuals
Repair
Service

Select a link below for more information on downloading the latest software, service pack, or firmware for your product. From the dropdown access release notes and download instructions.

Important! Before downloading any type of software:


- * Follow your organization's upgrade policies and procedures.
- * Ensure prior system backup to allow from recovery, should any problems arise, and perform a system test before full implementation.
- * If your Rimage system is part of an integrated solution, contact your solution provider to ensure your software version is compatible hardware components of the system.

Firmware	Version	Date
Rimage 2000i Autoloader	v. 6.210	September 2, 2008
AD-5200A Recorder	v. 1-G8	October 28, 2008
AD-5170A Recorder	v. 1-Gp	April 16, 2008
DVR-111D Recorder	v. 9.29	December 1, 2006
716A Recorder	v. 1.59	November 21, 2006
CD Premium Recorder	v. 1.56	April 29, 2005

Service Packs	Version	Date
Rimage 2000i Software v. 6.5 - 8.0	SP 1	September 16, 2008

2. Download the latest firmware version.

- a. At the control center, create a **new folder** labeled *Updated Firmware* on the C:\ drive.
- b. From the **Software, Firmware & Service Packs** tab, select the **link** to the latest firmware version.
- c. Select the **Download Now** button.
- d. Accept the **Rimage Firmware License Agreement**. The *File Download* dialog box displays
- e. Save the **.zip file** to the **Updated Firmware folder** that you created in step 3a.




R I M A G E®

PRODUCTS

Home > Support > Desktop Series > Rimage 2000i

AD-5200A Recorder v. 1-G8 Firmware

File Size: 730 KB
Version: 1-G8
Publish Date: 10/28/08





 Release Notes
 Installation Instructions

Download Now

Description


This firmware can be loaded on these autoloaders using an AD-5200A recorder:

- Producer 8100N
- Producer 7100N
- Amigo II
- Professional 5100N
- Professional 5300N
- CD 5000

3. Update the recorder with the latest firmware version.
 - a. From the left panel, select . The right panel displays Production Server information.
 - b. Select . Production Server pauses.
 - c. Repeat **steps a – b** for each Production Server.
 - d. From the **Control Center** menu, select **Update Recorder Firmware**.
 - e. Browse to the **firmware file** in the C:\Updated Firmware folder.
 - f. Select **OK**. Similar recorders are updated.
4. Restart Production Server.
 - a. Select  for each paused Production Server. Production Server stops.
 - b. Select  for each stopped Production Server. Production Server starts.

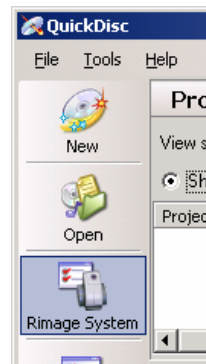
Update Recorder Firmware for the Rimage 2000i and 360i

The procedure in this document explains how to update the recorder firmware on Rimage 2000i and 360i autoloaders. Firmware updates keep your autoloader running at peak performance. Updates can be performed at the control center (PC) where the Rimage 2000i or Rimage 360i Software is installed.

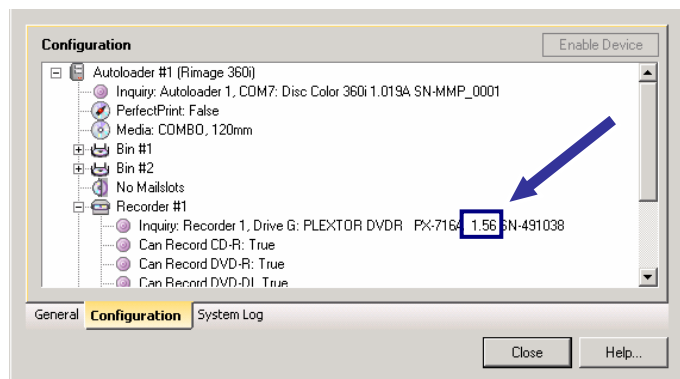
 **Note:** Unless otherwise indicated, all Windows navigation statements in this document are Windows XP paths. Windows 2000 and Windows Vista paths may differ slightly.

Procedure for Rimage 2000i and 360i Software

1. Check your current firmware version.
 - a. Open **Quick Disc**.
 - b. Select **Rimage System**. The *Rimage System* window opens.
 - c. Select the **Configuration** tab.




- d. Locate the **recorder firmware version**. The current recorder firmware version is located in the recorder description, as shown.
- e. Select **Close** to close. The *Rimage System* window closes.



2. Locate the latest recorder firmware version at www.rimage.com/support.
 - a. From the **Support** menu select: **Desktop Series > Your Product > Software, Firmware & Service Packs** tab.
 - b. If the recorder firmware listed on the **Software, Firmware & Service Packs** tab is newer than your current recorder firmware, download the firmware. Refer to **step 3**.

If the firmware version listed is the same as your recorder's current version, no further action is needed. Periodically check the Rimage Support site for firmware version updates.

Rimage 2000i Support



At Rimage, we know how important support is to our users.

We strive to provide you with as much information as possible to set up, use and troubleshoot your autoloaders and printers. From here you can download software, service packs, and firmware, as well as view our award winning user documentation and service information. Select a tab below to learn more.

End of Service for some Rimage 2000i autoloaders

Software, Firmware & Service Packs
User Manuals
Repair
Service

Select a link below for more information on downloading the latest software, service pack, or firmware for your product. From the access release notes and download instructions.


Important! Before downloading any type of software:

- * Follow your organization's upgrade policies and procedures.
- * Ensure prior system backup to allow from recovery, should any problems arise, and perform a system test before full implement
- * If your Rimage system is part of an integrated solution, contact your solution provider to ensure your software version is complete hardware components of the system.

Firmware	Version	Date
Rimage 2000i Autoloader	v. 6.210	September 2, 2008
AD-5200A Recorder	v. 1-G8	October 28, 2008
AD-5170A Recorder	v. 1-Gp	April 16, 2008
DVR-111D Recorder	v. 9.29	December 1, 2006
716A Recorder	v. 1.59	November 21, 2006
CD Premium Recorder	v. 1.56	April 29, 2005

Service Packs	Version	Date
Rimage 2000i Software v. 6.5 - 8.0	SP 1	September 16, 2008

3. Download the latest firmware version.
 - a. At the control center, create a **new folder** labeled *Updated Firmware* on the C:\ drive.
 - b. From the **Software, Firmware & Service Packs** tab, select the **link** to the latest firmware version. The *Firmware Download* page displays.
 - c. Select the **Download Now** button.
 - d. Accept the **Rimage Firmware License Agreement**. The *File Download* dialog box displays.
 - e. Save the **.zip file** to the *Updated Firmware* folder that you created in step 3a.


R I M A G E®

PRODUCTS

[Home](#) > [Support](#) > [Desktop Series](#) > [Rimage 2000i](#)

AD-5200A Recorder v. 1-G8 Firmware

File Size: 730 KB
 Version: 1-G8
 Publish Date: 10/28/08

Release Notes
Installation Instructions

Download Now

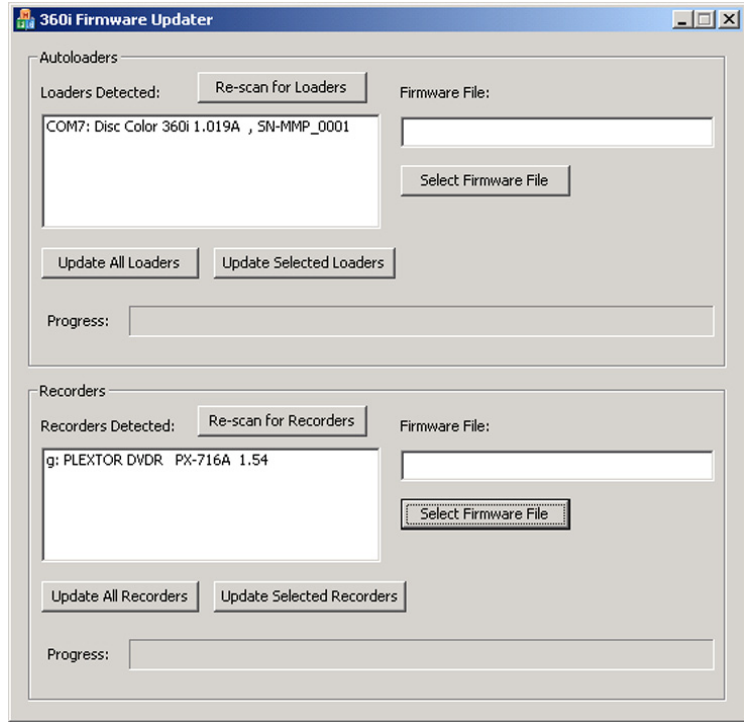
Description

This firmware can be loaded on these autoloaders using an AD-5200A recorder:

- Producer 8100N
- Producer 7100N
- Amigo II
- Professional 5100N
- Professional 5300N
- CD 4000

4. Prepare to update the recorder firmware.
 - a. Stop all **jobs**.
 - b. Close **QuickDisc**.

5. Update the recorder with the latest firmware version.
 - a. From the Windows **Start** menu select: **Programs > Rimage > Utilities > Rimage Updater**. The *Firmware Updater* window opens.
 - b. In the *Recorders* pane, select the **Select Firmware File** button.
 - c. Browse to the **firmware file** in the *C:\Updated Firmware* folder.
 - d. Select **OK**. The firmware file displays in the **Firmware File:** field.
 - e. Select **Update All Recorders**. The progress bar displays the update status. When the update is complete, a message displays that the firmware update succeeded.



- f. Select **OK** to close the message box.

The firmware update is complete.

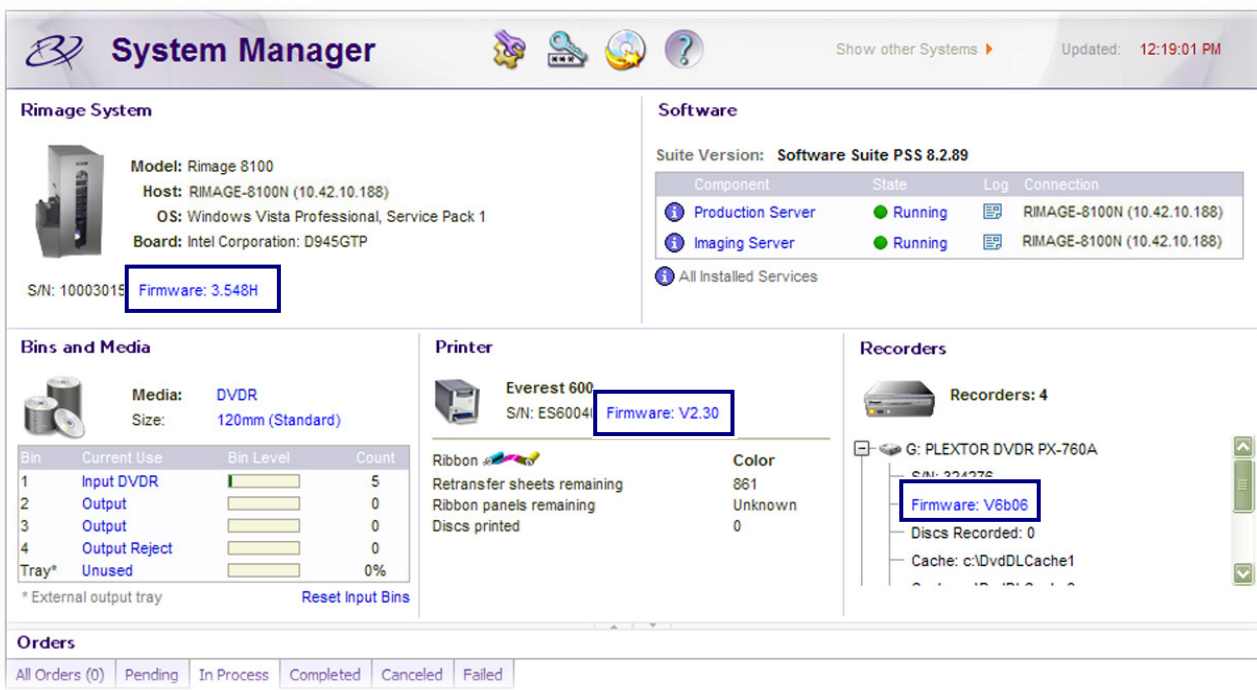


Update Firmware Using WebRSM

The procedure in this document explains how to use WebRSM to update the firmware on Rimage autoloaders, printers, and recorders. Firmware updates keep your system running at peak performance. Updates can be performed from any networked PC on which WebRSM is accessible.


Procedure for WebRSM

1. Check your current firmware version.
 - a. Log on to **WebRSM**. The Rimage *System Manager* window opens.
 - b. Check your **current firmware version number** under the Rimage System, Printer, or Recorders section, as shown.



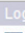

System Manager Show other Systems ▶ Updated: 12:19:01 PM


Rimage System

 **Model:** Rimage 8100
Host: RIMAGE-8100N (10.42.10.188)
OS: Windows Vista Professional, Service Pack 1
Board: Intel Corporation: D945GTP
S/N: 10003015 **Firmware:** 3.548H


Software

Suite Version: **Software Suite PSS 8.2.89**

Component	State	Log	Connection
Production Server	Running		RIMAGE-8100N (10.42.10.188)
Imaging Server	Running		RIMAGE-8100N (10.42.10.188)

 All Installed Services


Bins and Media

 **Media:** DVDR
Size: 120mm (Standard)

Bin	Current Use	Bin Level	Count
1	Input DVDR	<div style="width: 100%; height: 10px; background-color: green;"></div>	5
2	Output	<div style="width: 0%; height: 10px; background-color: yellow;"></div>	0
3	Output	<div style="width: 0%; height: 10px; background-color: yellow;"></div>	0
4	Output Reject	<div style="width: 0%; height: 10px; background-color: yellow;"></div>	0
Tray*	Unused	<div style="width: 0%; height: 10px; background-color: yellow;"></div>	0%


* External output tray [Reset Input Bins](#)

Printer

 **Everest 600**
S/N: ES6004 **Firmware:** V2.30

	Color
Ribbon	
Retransfer sheets remaining	861
Ribbon panels remaining	Unknown
Discs printed	0

Recorders

 **Recorders: 4**


G: PLEXTOR DVDR PX-760A
S/N: 224276 **Firmware:** V6b06
 Discs Recorded: 0
 Cache: c:\DvdDLCache1

Orders

All Orders (0) Pending In Process Completed Canceled Failed

2. Locate the latest firmware version at www.rimage.com/support.

- a. From the **Support** menu select: **Product Series > Your Product > Software, Firmware & Service Packs** tab.

 **Note:** The latest firmware versions are listed under the **Firmware** heading.

- b. If the firmware version listed on the **Software, Firmware & Service Packs** tab is newer than the version listed for your autoloader, printer, or recorder, download the firmware. Refer to **step 3**.

If the firmware version listed is the same as your product's current version, no further action is needed. Periodically check the Rimage Support site for firmware version updates.

Producer 8100N Support



At Rimage, we know how important support is to our users.

We strive to provide you with as much information as possible to set up, use and troubleshoot your autoloaders and printers. From here you can download software, service packs, and firmware, as well as view our award winning user documentation and service information. Select a tab below to learn more.

Software, Firmware & Service Packs | **User Manuals** | Repair | Service

Select a link below for more information on downloading the latest software, service pack, or firmware for your product. For access release notes and download instructions.

Important! Before downloading any type of software:

- » Follow your organization's upgrade policies and procedures.
- » Ensure prior system backup to allow for recovery, should any problems arise, and perform a system test before full installation.
- » If your Rimage system is part of an integrated solution, contact your solution provider to ensure your software version matches the hardware components of the system.


Firmware	Version	Date
Producer III Autoloader with Everest Printer	v. 3.604	March 5, 2009
Producer III Autoloader with Prism Printer	v. 3.604	March 5, 2009
Everest III Printer	v. 0504A_1.21	August 12, 2008

3. Download the latest firmware version.

- a. At the control center, create a **new folder** labeled *Updated Firmware* on the C:\ drive.
- b. From the **Software, Firmware & Service Packs** tab, select the **link** to the latest firmware version for your autoloader, printer, or recorder. The *Firmware Download* page displays.
- c. Select the **Download Now** button.
- d. Accept the **Rimage Firmware License Agreement**. The *File Download* dialog box displays.
- e. Save the **.zip file** to the *Updated Firmware folder* that you created in step 3a.



4. Update the autolader, printer, or recorder with the latest firmware version.
 - a. On the Rimage *System Manager* window, pause **Production Server**. Refer to the WebRSM online help for instructions.
 - b. Select the **firmware link** for the autoloader, printer, or recorder that you want to update. The corresponding *Firmware* dialog box displays.
 - c. Select **Browse** and navigate to the the **firmware file** in the *C:\Updated Firmware* folder.

 **Note:** Firmware files must be .HEX or .BIN files.
 - d. Select **Upload**. The autolader, printer, or recorder is updated with the latest firmware version.
 - e. Close the *Firmware* dialog box.
 - f. Start **Production Server**.

The firmware update is complete.

