

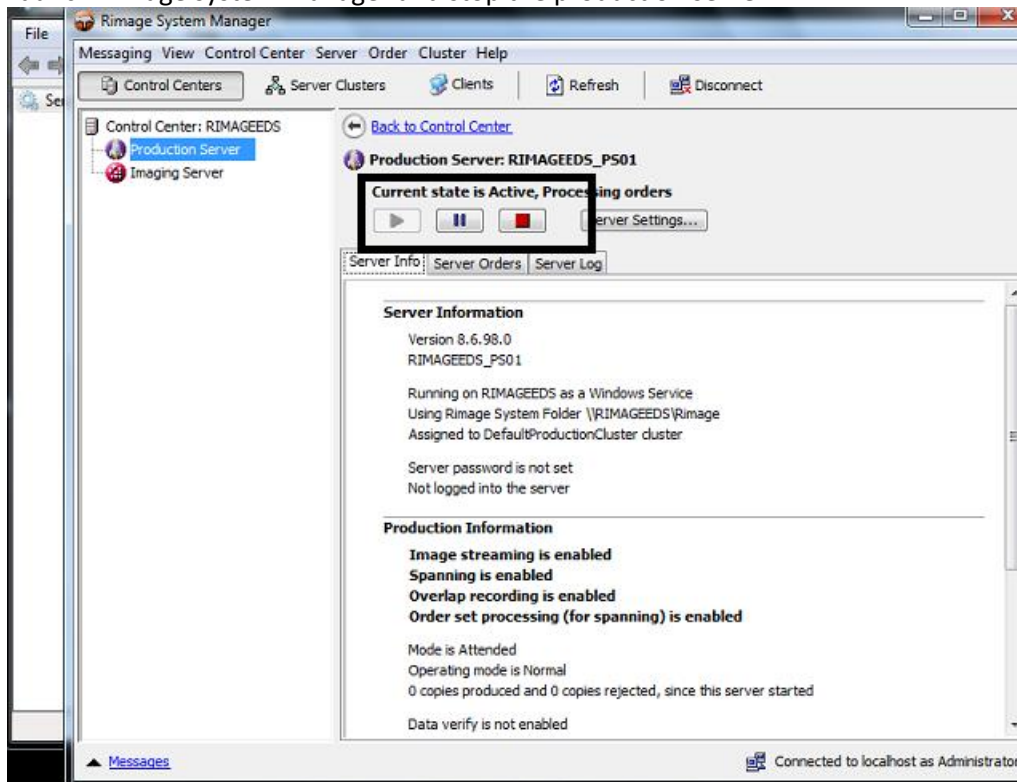
## 8100N/8100/7100N/7100 Firmware Instructions

### Required Tools

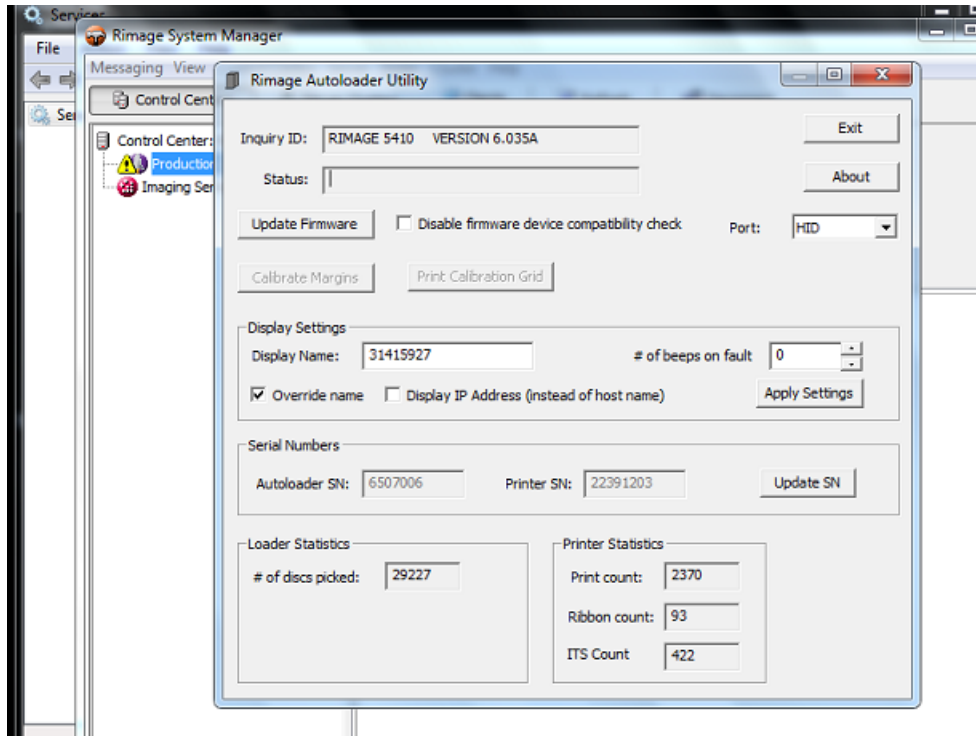
- Gemini Utility
- Firmware versions 3.631

### Process

1. Download the firmware version from [www.rimage.com](http://www.rimage.com).
2. Launch Rimage system manager and stop the production server.



3. Next launch the Gemini utility from the windows search and browse to the firmware you previously downloaded.



4. Select the firmware and press update firmware. When completed, restart the production server in Rimage System Manager.

