

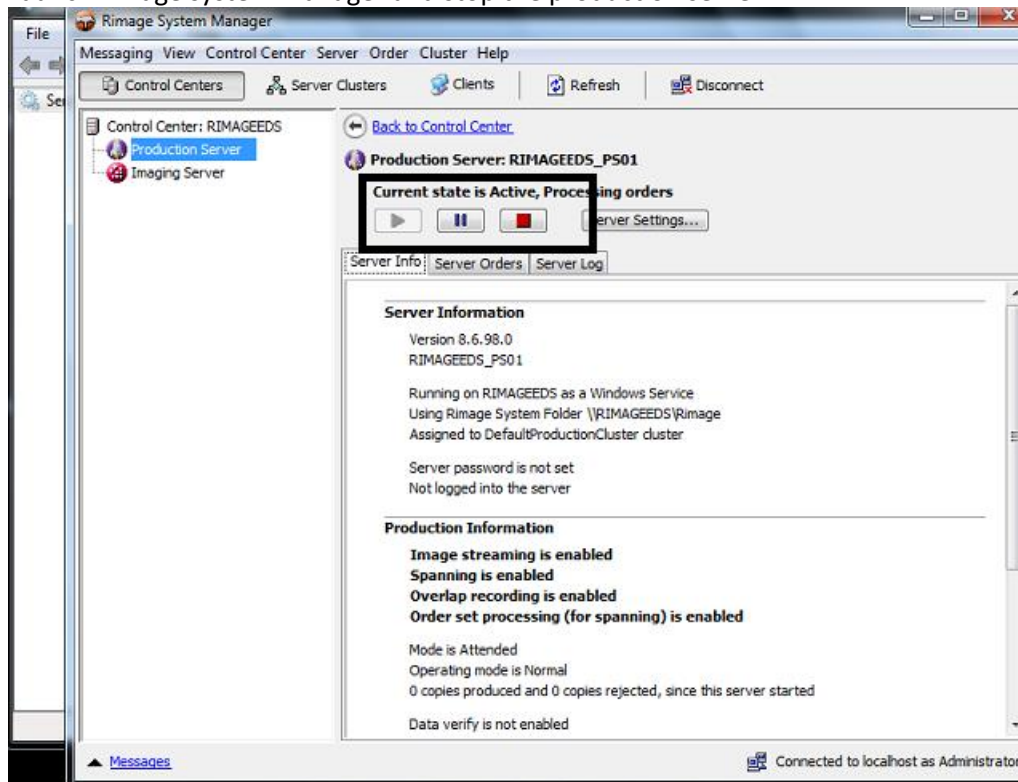
5400N / 3400 Firmware Instructions

Required Tools

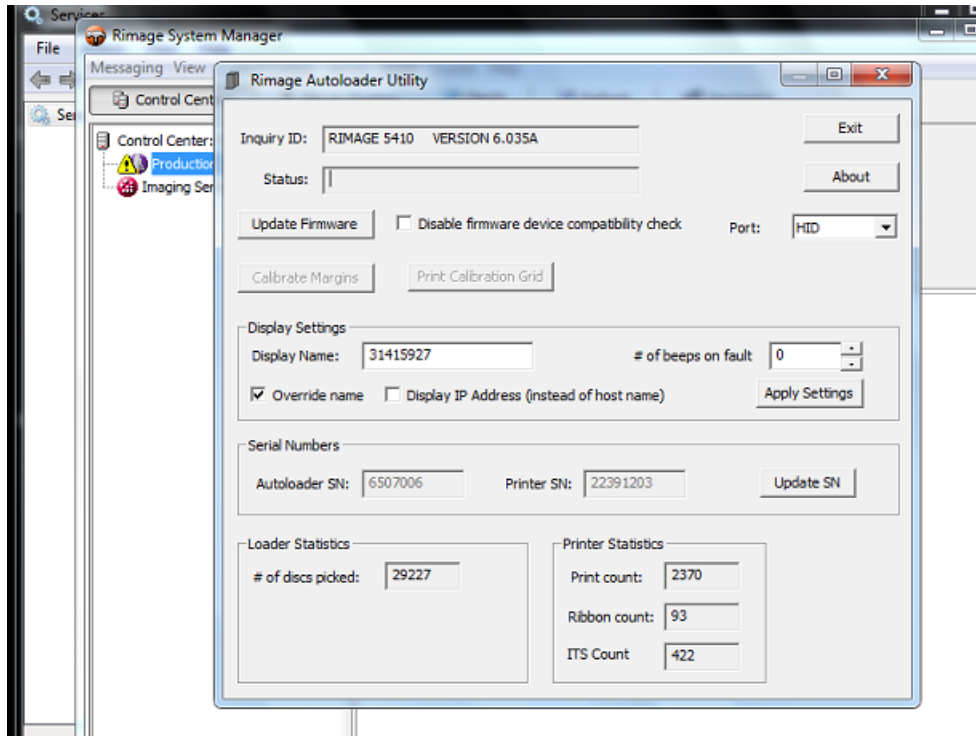
- Gemini Utility
- Firmware versions 6.034 or 5.032 for 3400

Process

1. Download the firmware version from www.rimage.com.
2. Launch rimage system manager and stop the production server.



3. Next launch the Gemini utility from the windows search and browse to the firmware you previously downloaded.



4. Select the firmware and press update firmware. When completed, restart the production server in Rimage System Manager.

