

## Prism III Firmware

Prism III firmware instructions to flash printer with latest firmware V6.022

### Required Tools

- Firmware version V6.022

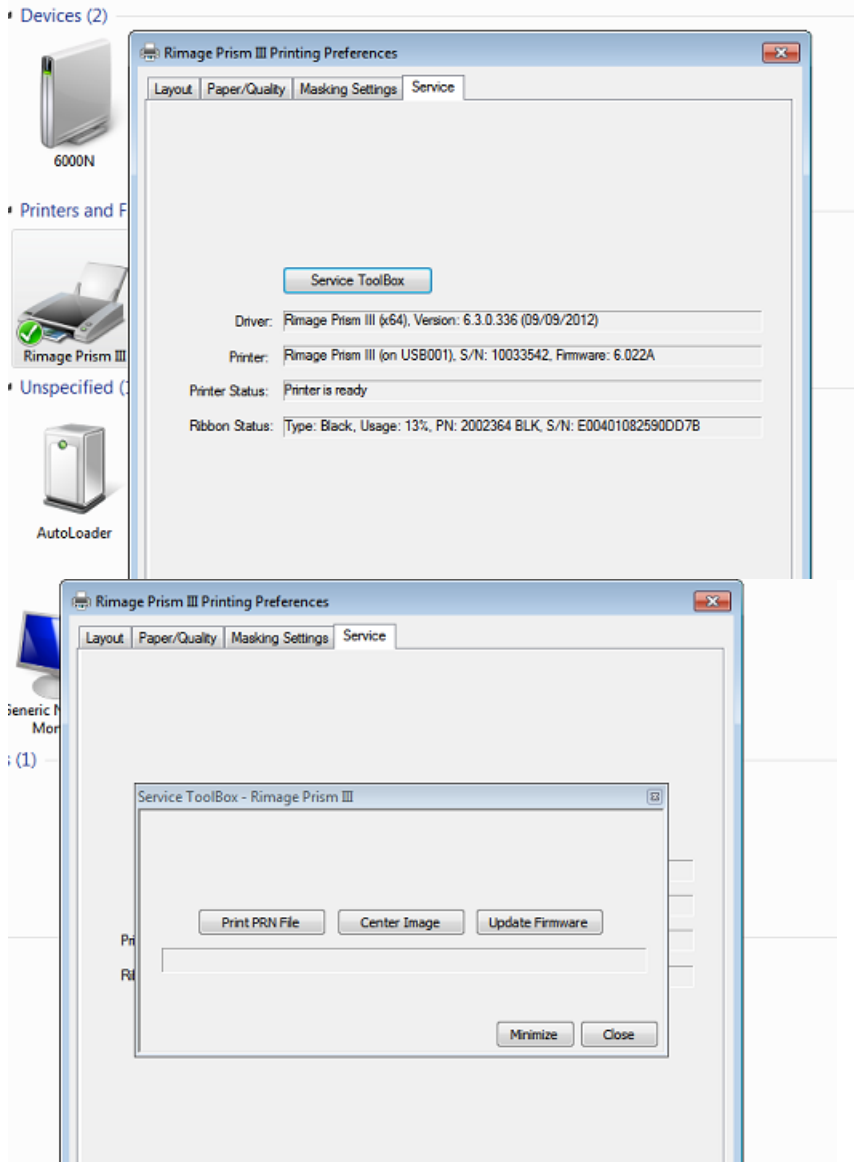
### Process

1. Download firmware version 6.022 at [www.rimage.com](http://www.rimage.com)
2. In Windows go to device and printers. Locate the prism 3 print driver.



3. Right hand click on the icon and select printer preferences. Then select the service tab. Next select service Toolbox.

# R I M A G E<sup>®</sup>



# R I M A G E<sup>®</sup>

4. Click the update firmware tab and browse to the location where you saved the firmware version 6.022. Now click update.

