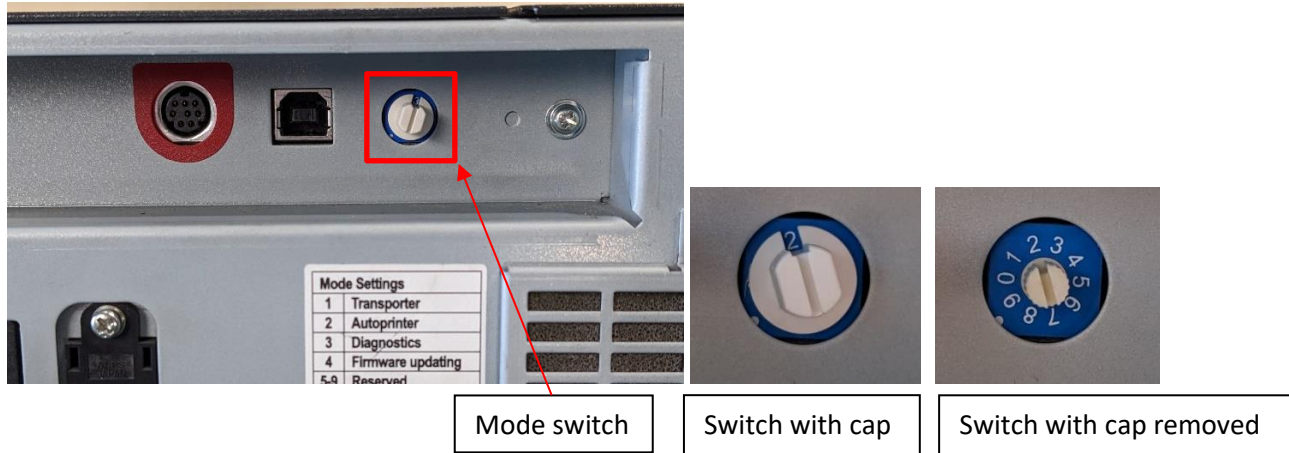


Everest Printer Mode Switch

The mode switch is a rotary switch used to set the operational mode of the Everest Encore/600. It is located on the back of the printer near the USB and Serial cables. The switch has 10 positions and has a ring at its base indicating positions 0 – 9. There is a cap on the switch with an opening at the base of the cap which indicates the selected mode.



How to Change the Printer Operation Mode

1. Disconnect the power cable from the printer.
2. Turn the mode switch clockwise/counterclockwise to the desired operation mode.
3. Reconnect the power cable. The printer will boot into the selected mode.

Note: If you change the operation mode without power cycling the printer, the printer will remain in its current mode.

Operation Modes

While the mode switch has ten positions, only positions 0 - 4 are active, the rest are unused.



Mode 0 – Standalone mode. Use this mode for a standalone printer that is not connected to an autoloader. The printer will not attempt to communicate with an autoloader.

R I M A G E[®]



Mode 1 – Autoloader mode. This mode is unused with Everest Encore/600/III. Older models of Everest use this mode when connected to an autoloader system with recorders.



Mode 2 – Autoprinter/Autoloader mode. Use this mode when connecting an Everest Encore/600/III to a Rimage autoloader or autoprinter. The printer will poll the device it is connected to, and automatically change how it communicates based on the loader model.

Older models of Everest use this mode when connected to an autoprinter.



Mode 3 – Diagnostics. Use this mode to perform printer diagnostic tests.

<https://support.rimage.com/hc/en-us/articles/360037856231-Everest-Diagnostic-Modes>



Mode 4 – Firmware Update. Use this mode to put the printer into a state that is ready to accept firmware. While this mode is active for Everest Encore/600, the printer is able to auto change to firmware update mode while in operating modes 0 and 2. Older models of printer must be changed to mode 4 for firmware updates.

Modes 5 – 9 are not used.