

Installing New Catalyst Mail Slot Slide

Before you begin:

- No tools are required for this procedure
- Power off the Rimage Catalyst autoloader prior to beginning this process

Remove old slide

- 1) Gently push the back plastic tab below the existing mail slot slide to unseat the pivot point from the system



- 2) Pull mail slot from system

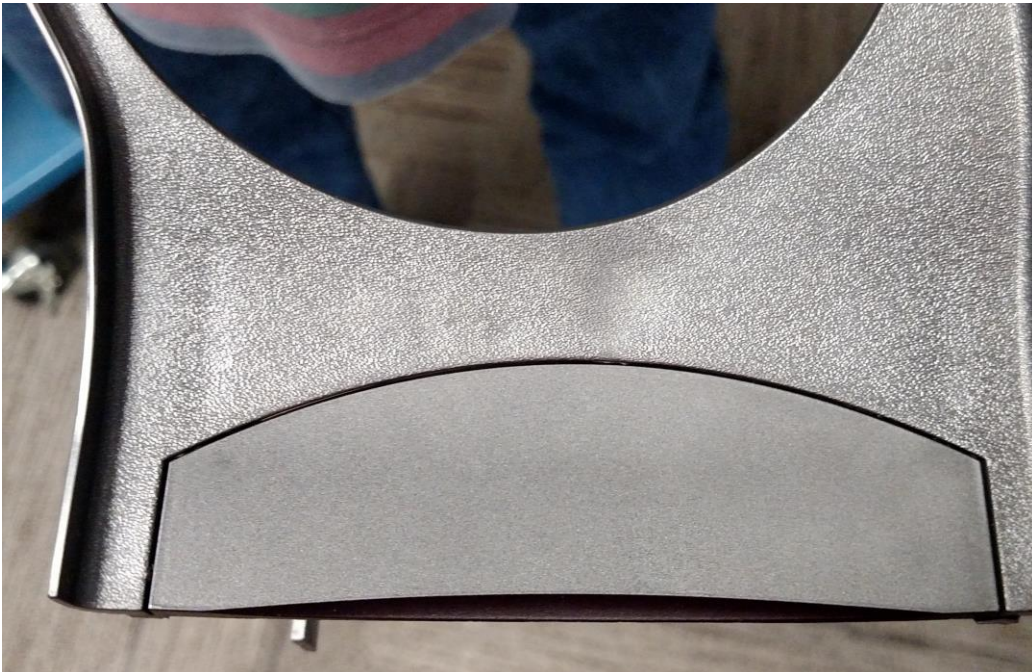
Remove diverter from existing slide

- 1) Press tabs on under side of slide and push diverter to remove it from the slide



Install diverter into new slide

- 1) Insert diverter onto the new slide, being sure to align lower tabs to the under side of the slide 2) Push until upper tabs lock into place



Install new mail slot slide

- 1) Set the new front mail slot pivot into system



- 2) Gently flex the plastic near the back pivot to seat into the system
- 3) Manually lift the slide to be sure the slide pivots and drops back into default position correctly