

Installing New Catalyst Mail Slot Slide

Before you begin:

- No tools are required for this procedure
- Power off the Rimage Catalyst autoloader prior to beginning this process

Remove old slide

- 1) Gently push the back plastic tab below the existing mail slot slide to unseat the pivot point from the system



- 2) Pull mail slot from system

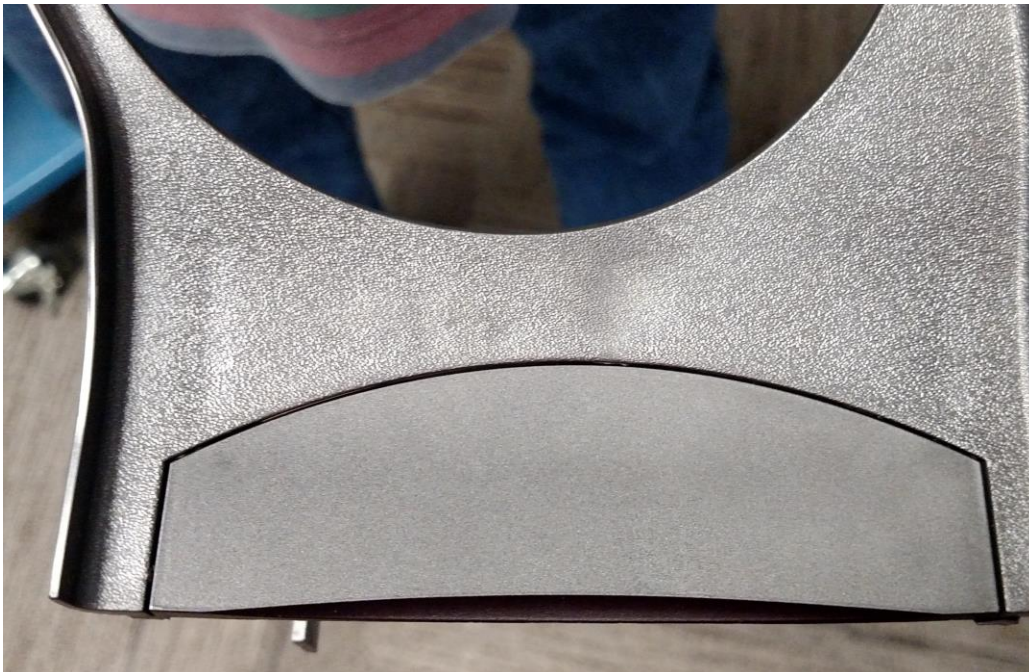
Remove diverter from existing slide

- 1) Press tabs on under side of slide and push diverter to remove it from the slide



Install diverter into new slide

- 1) Insert diverter onto the new slide, being sure to align lower tabs to the under side of the slide
- 2) Push until upper tabs lock into place



Install new mail slot slide

- 1) Set the new front mail slot pivot into system



- 2) Gently flex the plastic near the back pivot to seat into the system
- 3) Manually lift the slide to be sure the slide pivots and drops back into default position correctly